



ARRI



PRODUCT HIGHLIGHTS AND SOLUTIONS

September 2022



Table of contents

The ARRI camera system philosophy	4	Pro Camera Accessories Mechanical accessories	
		Accessories for Sony Venice 2	32
Super 35 cameras		A passion for lighting	34
ALEXA 35	8		
AMIRA Live	14	LED lighting fixtures & software	
		ARRI's LED ecosystem	38
Large-format cameras		Orbiter	40
ARRI large-format camera system	12	SkyPanel	48
ALEXA LF	12	Stellar App	50
ALEXA Mini LF	13	Photometrics App	51
		ARRI Certified Pre-Owned	52
Cine lenses			
ARRI Signature Prime lenses	16	Solutions & applications	
ARRI Signature Zoom lenses	18	Introduction	54
Magnetic Rear Filter Holder	20	Reference projects	56
LPL mount	21	Broadcast Solutions	58
		ARRI LightNet	60
Camera Stabilizer Systems		Remote Solutions	62
TRINITY 2 and ARTEMIS 2	22	Photography and video	64
Stabilized Remote Head SRH-360	24		
Digital Remote Wheels DRW-1	25	Learn & help	
Digital Encoder Head DEH-1	25	Workflow Solutions	66
External Radio Modules	26	ARRI YouTube Channel	67
Stabilizer Adapter Mounts	26	ARRI Academy	68
		ARRI Service	70
B-Mount battery interface	27		
		Pro Camera Accessories Electronic Control System	
Pro Camera Accessories Electronic Control System		Hi-5 hand unit	28
Hi-5 hand unit	28	RIA-1 radio hub	30
RIA-1 radio hub	30		

Cover image of ARRI Stage © Ian Wallman

The ARRI camera system philosophy

Integrated product lines that stand the test of time

For over 100 years, ARRI has been making tools that expand creative possibilities for filmmakers. Today, the uniquely wide range of interconnected camera products available from ARRI reflects the company's system approach. Every piece of ARRI equipment is assembled under the highest quality standards and subjected to extensive testing before it can leave our facilities. ARRI's experienced craftsmen and women are committed to top-notch precision, which results in products that deliver many years of faithful service. ARRI also works closely with other manufacturers to establish industry standards and maintain third-party compatibility.



A complete ecosystem of connected tools





“The image that the LF and the Signature Primes produce seems, to me, more like what my eyes see than anything else I've experienced so far.”

Cinematographer Sir Roger Deakins CBE, ASC, BSC



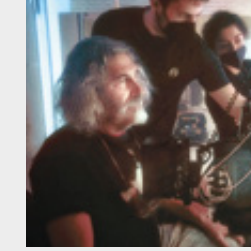
“With [ALEXA 35's] increased light sensitivity and more detail in the highlights, I can be even more bold with my lighting and exposure choices.”

Cinematographer Ari Wegner ACS



“It was a very difficult lighting situation to put ourselves in, with bright windows in the background and lots of negative fill in the foreground. The ALEXA 35 was spectacular, it outperformed all my expectations. I could not get the camera to clip; the dynamic range is so wide and impressive. This is a completely new generation.”

Cinematographer Erik Messerschmidt ASC



“Sometimes we work with extreme values of light, shadow, and contrast, which requires immediacy, speed, and the highest level of creativity. ARRI Signature Zooms have made it possible for my gaze to flow between these textures, providing a powerful visual brush and giving the image personality, beauty, and sensitivity.”

Cinematographer Rafa Bolaños AEC



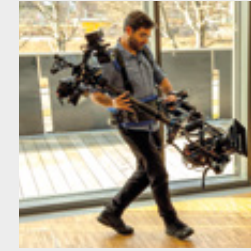
“We used Signature Primes along with the Mini LF to shoot re-enactments for a documentary on location in Las Vegas. We were constantly on the move and quickly changing lenses, which was easy with the Signature Primes because they're so lightweight. The Signature Primes paired with the Mini LF created a beautiful look with the lights and colors of Las Vegas. The image quality is sharp and clean, but still extremely natural looking. It was a perfect fit for our project!”

Camera operator Sophie Bruza



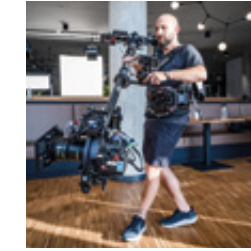
“The production 'Friends of Mark Forster,' captured with the ARRI Multicam System, showed once again that using cinema cameras for live entertainment brilliantly puts the artist into the scene like no other camera does.”

Stephan Thomsen, M00 Video Productions



“The modularity in the new design of the ARTEMIS 2 and TRINITY 2 is outstanding. From an operator's point of view, this is now a new era in our world, where limitations don't exist anymore.”

TRINITY operator Fares Corbani SOC, ACO



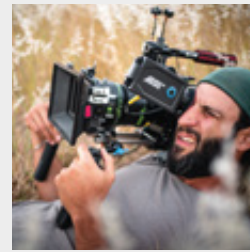
“There is a natural intuition to the TRINITY 2. You have more freedom to discover new moves and it's a lot more limitless.”

TRINITY operator Ari Robbins SOC



“I love the image from the Signatures. It's a very clean look, but not too sharp; it has a softness that seems very film-like to me, and when I put flare in the lens it really looks beautiful. The way out-of-focus areas look with the Signatures is one of the reasons why I want to keep using them.”

Cinematographer Keiko Nakahara



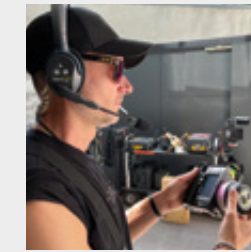
“I chose Signature Primes because I wanted a modern lens set with a natural image. They are incredibly light, which really helped when shooting handheld or with a Ronin stabilizer. The flares are beautiful and easily tamed, and the T1.8 aperture is an asset for reduced depth of field.”

Cinematographer Antony Diaz



“The ARRI SRH-360 packs a huge amount of performance into a compact build. Being able to run up to 30 kg payload in a lightweight head keeps the weight of our whole system down. This makes an enormous difference when creating dynamic shots at high speed.”

Cinematographer Sam Meyer



“The first thing I thought when I held it in my hands was actually, 'The Eagle has landed.' It's an absolutely 'from you for you' product, because I can see an extremely large amount of input from assistants in the industry implemented. The Hi-5 feels great and I'm quite sure it will become the new gold standard for focus pullers worldwide.”

1st AC Karl Keil



ALEXA 35

Raising the bar

ALEXA 35 is a 4K Super 35 camera that elevates digital cinematography to unprecedented heights. ARRI's first new sensor for 12 years builds on the evolution of the ALEXA family over that period, delivering 2.5 stops more dynamic range, better low light performance, and richer colors. The new REVEAL Color Science takes full advantage of the sensor's image quality, while ARRI Textures enhance in-camera creativity. Easy operation, robust build quality, and new accessories round out the ALEXA 35 platform.



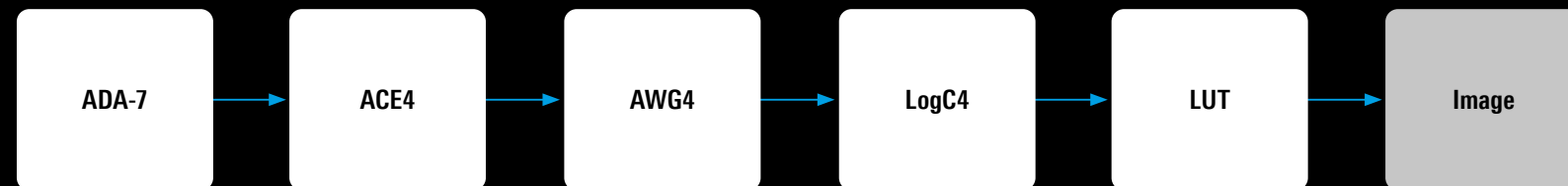
- Industry-leading image quality at native 4K and 120 fps
- 17 stops of dynamic range with filmic highlight roll-off
- "High ISO" up to EI 6400 and Enhanced Sensitivity Mode
- Richer color rendition through REVEAL Color Science
- More creative control via ARRI Textures and wide lens choice
- Complete range of accessories and workflow tools



Faster workflow, higher image quality

ARRI's discussions with filmmakers and careful review of the image pipeline have led to significant image quality enhancements and a faster, easier workflow. REVEAL Color Science is a suite of new image processing steps used by ALEXA 35 internally and also available through leading third-party postproduction tools for ARRIRAW processing. It includes an improved debayering algorithm for cleaner compositing, a new color engine for more accurate color reproduction, a new wide gamut native color space for faster grading, new LogC4 encoding to contain the increased dynamic range, and new LogC4 LUTs (Look Up Tables) for enriched color fidelity.

REVEAL Color Science process



Lightweight Set



Production Set



Support for any situation ALEXA 35 system components

ARRI has crafted a new line of bespoke ALEXA 35 accessories that expand the camera's capabilities and ensure maximum speed and versatility on set. Closely integrated electronic accessories offer additional power outputs or extended audio features. A complete new set of mechanical support items provides flexible options for any situation, scaling quickly and easily from a small and lightweight setup to a full-blown production configuration. ALEXA 35 is available in sales sets that group together components suitable for different shooting styles and production types, with further accessories and system options facilitating countless setups.

Large-format look, with ALEXA image quality

Two cameras, covering every requirement on set

ALEXA large-format cameras record native 4.5K with ARRI's best overall image quality. Versatile recording formats allow filmmakers to explore the large-format look, while benefiting from the natural colorimetry, pleasing skin tones, low noise, and suitability for High Dynamic Range (HDR) and Wide Color Gamut (WCG) workflows. The two LF cameras complement each other on set, with their combined feature sets and form factors covering all shooting requirements. Following the release of SUP 7.0, the ALEXA Mini LF can now record in Super 35 as well as large format.



Large format, high speed, fully featured

- Best overall image quality
- Large-format sensor for a large-format look
- Solid, dependable, feature-rich production camera
- High-speed recording up to 150 fps at full sensor width
- Three independent SDI outputs
- Lots of accessory power outputs (4 x 24 V and 1 x 12 V)
- Built-in wireless video transmitter
- EVF-2 high-contrast HD viewfinder

ALEXA LF



ALEXA MINI LF



Discover all recording options

The go-to camera for drama series, feature films, and commercials

- Best overall image quality
- Large-format sensor for a large-format look
- Robust and reliable
- Suitable for Super 35 and large format
- Compact and lightweight
- Internal recording to CODEX Compact Drive
- Interchangeable lens mounts
- MVF-2 high-contrast HD viewfinder with flip-out monitor



© Courtesy of LMC Vision



© Vithagan RaaJ Suryan



AMIRA **LIVE**

The cinematic Super 35 live TV camera

Cinematographers strive for a cinematic look; producers seek efficient and flexible workflows. When it comes to live, multi-camera productions, these requirements can conflict. ARRI Multicam overcomes this with a simple-to-integrate solution that combines ARRI cameras and a fiber backend to deliver a cinematic aesthetic with the efficiency of a live transmission system.

AMIRA Live features internal cabling between the camera body and the Fiber Camera Adapter, resulting in a cleaner and more reliable configuration for live broadcast environments. The cableless design makes AMIRA Live more like the traditional system cameras typically used for multi-camera broadcasts, while the Super 35 ARRI sensor captures uniquely cinematic images, with shallow focus, rich textures, and natural colors.



- Live broadcast images on a par with high-end movies, TV series, and OTT productions
- Ideally suited to multi-camera live broadcasts
- Faster setup of the camera system
- Reduced risk of accidental cable disconnection or damage
- Cleaner camera configuration is easier to work with for camera operators
- Versatile 10-inch Viewfinder Multicam Monitor VMM-1



Image capture 1: Shooting with standard 2/3-inch camera



Image capture 2: Shooting with ARRI camera

Detailed highlights, deep shadows Amazing dynamic range, even in SDR

Scenes with a high contrast range, which are not possible to capture with conventional broadcast cameras, can be recorded in all their detail thanks to the high dynamic range of the ARRI image sensor. This helps television productions to balance interior lighting and video displays with exterior daylight through windows, or accommodate any other high-contrast studio or location setup.



Signature Prime

The Signature Primes encompass a uniquely wide focal length range of 12 mm to 480 mm. Solidly built and designed to work flawlessly in the most extreme on-set conditions, they offer an immersive look that will not go out of style: warm textures, pleasing skin tones, deep shadows and yet crisp blacks, smooth focus fall-off, and bokeh like looking through a window in the rain.



- All T1.8, aside from the 200 mm (T2.5) and 280 mm (T2.8)
- The new ARRI Extender turns the 280 mm (T2.8) into a 480 mm (T4.95)
- Exceptional background separation
- Soft and delicate flares
- Fine details beautifully rendered
- Very low distortion and chromatic aberration
- Ideal for HDR workflows



Signature Zoom

Accompanying and matching Signature Primes, ARRI Signature Zooms render the most natural and beautiful images ever seen from a cine zoom. The four lenses display consistently high image quality whatever the zoom or iris setting, and—with the dedicated extender—offer an unrivalled focal length range of 16 mm to 510 mm. Their optical and mechanical performance sets a new high standard for the industry.



- All four zooms T2.8
- The new ARRI Extender turns the 65-300 mm (T2.8) into a 110-510 mm (T4.95)
- Same timeless look as Signature Primes
- Creamy out-of-focus highlights and superb close focus
- No ramping—consistent exposure through all focal lengths
- Minimal color aberration and focus breathing
- Ideal for HDR workflows





Watch the Tech Talk

Magnetic Rear Filter Holder

Create your own Signature look

The detachable ARRI Magnetic Rear Filter Holder for Signature lenses opens up all kinds of customized looks, without having to disassemble the lens. No other manufacturer offers this degree of creative customization across a range of matched primes and zooms. The filter holder accommodates a wide variety of materials, allowing filmmakers to experiment as much as they want. Glass elements can be used to simulate vintage lenses, or anything from fishing line to stockings and vintage fabrics can be tried—each of them affecting bokeh, flaring, and diffusion in different ways.



- Endless scope to create unique looks that are consistent across Signature Primes and Zooms
- Enhanced production value without additional cost
- Filmmakers can experiment themselves
- Fast and easy changes of look, with no tools needed
- Whatever customization is used, the lens itself remains unchanged

- LPL mount available for ALEXA LF/Mini LF, ALEXA Classic/XT/SXT/Mini, AMIRA, and ALEXA 65
- Third-party cameras can also be fitted with LPL mount
- Purpose-designed for large-format digital cinematography
- PL-to-LPL adapter allows the use of PL mount lenses
- Robust and rock-steady locking mechanism



Universal compatibility

Ready for use on all professional cameras

Signature Prime and Signature Zoom lenses are equipped with the LPL lens mount. ARRI has shared LPL specifications openly and free of charge across the industry, allowing other manufacturers to offer LPL adapters, director's viewfinders, and lens testing tools that make the Signature family, and other LPL lenses, universally compatible. The LPL mount works across all formats, from Super 35, through large format, up to 65 mm. A wider diameter and shorter flange focal depth allow for high-performance, compact lens designs that would not be possible in a PL mount lens.





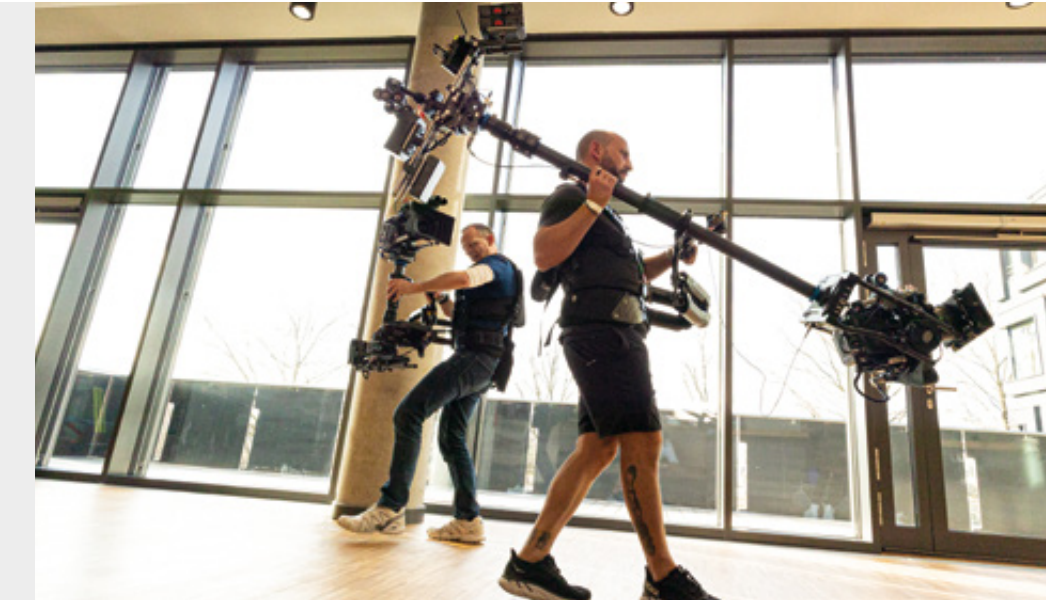
TRINITY 2 and ARTEMIS 2

One modular system, two new stabilizers

Introducing a new generation of camera stabilizers: TRINITY 2 and ARTEMIS 2. Designed and built in Germany, the ARRI stabilizer system enables the most versatile, creative, and perfectly steady camera moves. Many new features have been implemented, based on customer feedback, making this the most sophisticated camera stabilizer system ever developed. Durable and upgradeable, it offers the longest, most secure return on investment for owner-operators.

TRINITY 2

- Greater range of movements and shot possibilities
- 360° rotation on the lens axis
- LBUS-based Master Grip to easily control key functions
- Touchscreen remote control for on-the-fly adjustments



- Effortless transition between the two stabilizers for different applications
- Setting new industry standards for connectivity, intelligent power management, and user interface
- Interchangeable battery systems (B-Mount, V-Mount, Gold Mount)
- Easy to learn and adopt thanks to design quality and intuitive user interface
- Modular system enables easy upgrade from ARTEMIS 2 to TRINITY 2

ARTEMIS 2

- Compatible with SAM plates for quick, versatile setups
- Extreme angles possible with Super Post
- Speed and agility with Shorty Post
- New components for easy upgrade to TRINITY 2





Stabilized Remote Head SRH-360

Powerful and extremely flexible

The SRH-360 is a three-axis, fully stabilized remote head that allows incredible camera moves to be achieved with flexibility and ease, including 360-degree rotation on the pan axis. Whether on a movie set, in a TV studio, or at an event, the SRH-360 and digital controllers such as the DRW-1, DEH-1, and Master Grips can be combined with ARRI CSS accessories like the SAM plates and external radio modules.



Digital Remote Wheels DRW-1

Traditional movie-style operating

The DRW-1 combines state-of-the-art digital technology with the mechanical touch and feel of ARRI's classic crank wheels.

Now compatible with TRINITY 2

- LBUS protocol for control of the ARRI SRH product family
- Sophisticated digital workflow for maximum control



- Outstanding stabilization built into a compact and powerful remote head
- High-torque brushless motors, with a camera weight capacity up to 30 kg/66 lb
- Exceptional flexibility and creativity enabled by unlimited freedom of movement on the pan axis
- LBUS provides quick and easy workflows to control the remote head and lens for cine and broadcast applications
- A wide range of LBUS controllers and mechanical accessories adapt the SRH product family to any situation

Digital Encoder Head DEH-1

Precise control via remote fluid head

ARRI's DEH-1 is the first fully digital encoder head that communicates through the LBUS protocol with the SRH product family.

- Ideal for broadcast, documentaries, or feature films
- Adjustable friction for precise pan and tilt movements
- Can be combined with ARRI Master Grips and OCU-1
- Compatible with any Mitchell flat base tripod or support



ERM-2400 SRH, ERM-900 SRH, ERM-2400 LCS

Long-distance wireless control

External radio modules that provide a reliable point-to-point radio link for the most demanding RF environments.

- Designed for the distinct Stabilized Remote Head and Electronic Control System radio protocols
- 1,000 m/3,280 ft range with ERM-2400 SRH and ERM-2400 LCS
- 3,000 m/9,840 ft range with ERM-900 SRH



B-Mount

Powering the future

The B-Mount battery interface is an open industry standard endorsed by ARRI and the wider industry. Providing high-capacity 24 V power, but also able to support 12 V, B-Mount offers more efficiency and improved data communication over previous systems. Cross-compatible with camera, lighting, and stabilizer equipment from manufacturers worldwide, it enables productions to streamline their power requirements.



Stabilizer Adapter Mounts SAM

Fast, versatile setups

ARRI's SAM plates allow quick, simple, and secure mounting to ARRI TRINITY 2, ARTEMIS 2, MAXIMA, and SRH devices. Their robust design ensures a safe setup.

- Compatible with ARRI and third-party cameras
- Support camera packages weighing up to 30 kg (66 lb)
- Available in various lengths for small and large lenses



- Specifications are fully documented and open to any company
- High-capacity, future-proof power for cameras and lights
- Robust construction, compact form factor, and seamless interlocking
- Suited to modern camera stabilizer systems and compliant with on-board safety standards for the lighting industry
- Bi-voltage ready, B-Mount will power future ARRI cameras and lights



Hi-5 Hand Unit

5th generation intelligent hand unit

The new ARRI Hi-5 is the most sophisticated hand unit on the market, providing reliable wireless camera and multi-axis lens control. Weatherproof and solidly built, it features an exceptional radio link range and unique, swappable radio modules for different territories and shooting challenges.

Hi-performance | Hi-versatility | Hi-speed | Hi-tech | Hi-reliability



Hi-5



© Wojtek Ciszewicz

- Multi-axis lens control with split-second reconnection time
- Powerful radio signal cuts through interference
- Swappable radio modules for different regions/situations
- Full camera control (including third-party cameras) and Focusbug Cine RT support
- Integrated NATO rail and multiple mounting points
- ECS Sync App: easy software updates and lens file management
- Intelligent, high-capacity batteries
- Hot-swap battery technology

Hi-5 Ecosystem



- **RF-EMIP, RF-2400, and RF-900**
Three interchangeable radio modules, each suitable for different frequency regulations and shooting situations.
- **RIA-1 Radio Interface Adapter**
Works as a motor controller that supports ARRI radio modules and can function as either a receiver or transmitter.
- **Smart Focus Rings**
Speed up your workflow with our large selection of pre-marked focus rings, featuring electronic ring detection.

- **Li-ion Battery Pack**
ARRI's high-capacity Li-ion Battery Pack allows a precise readout of remaining battery capacity to be displayed on the Hi-5 screen.
- **ECS Sync App**
This iOS app enables file sharing, news and software updates, and answers FAQs about the ECS ecosystem.



Discover the ECS Sync App



- Supports ARRI's exchangeable radio modules: RF-EMIP, RF-2400, RF-900
- RX/TX switch: operates either as a receiver or a transmitter
- Can connect to a camera for power, start/stop/tally, and camera control, and to LBUS devices for lens control
- Compact motor controller, compatible with any camera
- Multiple 3/8-16 and M4 mounting interfaces
- Supports common distance measurers like Focusbug Cine RT, ARRI UDM-1, and Cine Tape Measure via SERIAL interface



RIA-1 A hub for the Hi-5 ecosystem

Capable of functioning as a receiver, transmitter, or motor controller, the RIA-1 Radio Interface Adapter is a highly versatile component in the Hi-5 ecosystem. Compact and robust, it supports ARRI's exchangeable radio modules and provides multiple connectors for wireless control of ARRI or third-party cameras and lenses.





Watch the Tech Talk

Pro Camera Accessories for Sony Venice 2

Professional functionality

Pro Camera Accessories bring film-style functionality and the rugged build quality for which ARRI is famous to cameras from other manufacturers, allowing them to be used more easily and reliably in challenging, fast-paced professional environments. Responding to customer feedback, ARRI's new components for the Sony Venice and Venice 2 offer further rigging options and enhanced ergonomics. The new base plate, top plate, and two side brackets can be combined with each other and with existing ARRI accessories to equip Venice cameras for any shooting requirement.

Broadcast Pro Set



Cine Pro Set



- Accessories improve the ergonomics and professional usability of the standard base cameras
- Comfortable shoulder operation: more than 100 mm of travel for balancing handheld setups
- Adjustable top handle easily accommodates Easyrig balance point
- Base plate allows rapid, tool-less changes between a variety of different mounts
- Versatile M4, 3/8-16, and 1/4-20 accessory attachment points
- ARRI Multi-HEX screw technology permits the use of more than one tool



A passion for lighting

Pure creativity, expressive power, and elegant brilliance in every detail



Light is an integral part of our lives and always has been. It is essential to everyone. ARRI lives and breathes lighting; we have been making lights for as long as we've been making cameras, so it's in our DNA. The versatility of ARRI luminaires in combination with the newest firmware features and a wide range of accessories will illuminate your artistic vision. ARRI lighting technology pushes the boundaries of what is creatively possible, opening incredible new opportunities and applications. State-of-the-art fixtures and immensely flexible control options provide the toolset you need to save time on set and the freedom to focus on your creative process. Interact with the light, paint with the light, and make the light work for you.



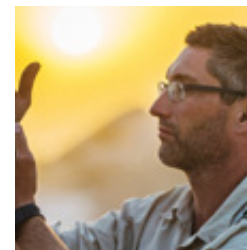
“After testing the Orbiter with almost every attachment, I’m sure that this fixture will change my way of shooting. Its new Quick Lighting Mount saves an enormous amount of time, making the lamphead’s versatility even more valuable. And because of ARRI’s top-quality construction, Orbiter will last for a long time. In combination with the SkyPanel family, the Orbiter will become a new workhorse for me.”

Andy Stein, gaffer & rental house owner, Germany



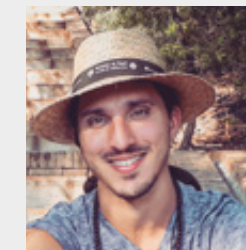
“Orbiter’s optical system and color versatility are a groundbreaking combination. The color science renders natural-looking skin tones in tungsten or daylight, along with an endless array of variable colors. The optical system gives me the choice of a focusable direct beam, indirect bounce source, or diffused lighting from the same fixture. Orbiter provides fast, efficient lighting options in an industry where every second counts.”

Cory Geryak, cinematographer, US



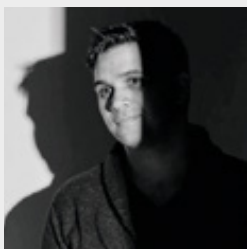
“For ARRI’s LED units, Stellar is wonderful and extremely useful for wireless control. The app is really easy to use and self-explanatory, and by using RDM instead of DMX, it is also unbelievably fast to set up. Stellar is intuitive, playful control at your fingertips.”

Timm Brueckner, gaffer, Germany



“The SkyPanel is an incredible fixture in the studio. I use it in multiple configurations, both as a top light and for backgrounds or to create backlighting on large widths. There is nothing better as an LED light at the moment. I am regularly offered new products but each time none match the SkyPanel.”

Sidney Baucheron, chief electrician & gaffer, France



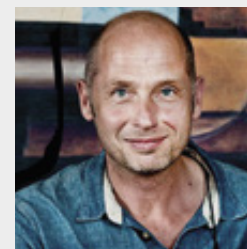
“The new ARRI Orbiter represents an exciting new chapter for my work as a lighting designer in theater, opera, and dance. The ARRI SkyPanel S60 and S360 have been essential tools for so much of my work internationally. The quality of light from both the SkyPanel and Orbiter is outstanding and provides the gorgeous color and incredible intensity that directly matches the larger-than-life world we live in today.”

Brandon Stirling Baker, Lighting Director, Boston Ballet, US



“Orbiter makes it so easy to change colors. It offers so much variety! Creative use of color is what’s trendy right now, and clients want the image to be more energetic, more colorful, more powerful. With Orbiter, I’ll be able to create brighter, more intense images.”

Vika Pobeda, fashion photographer, US



“The ARRI SkyPanel gives filmmakers the ability to quickly change colors without the need for gels. This creates new choices and allows for more creativity on set.”

Helmut Prein, gaffer, Germany



“Orbiter has a very impressive new function: the color sensor. It can tell you the overall color temperature on set and adjust itself to the right color temperature to make the lighting look harmonious. This is definitely a great help, since it’s all about efficiency nowadays. Also, the wireless DMX can control color temperature, brightness, and special lighting effects, which saves lots of time adjusting lights and gives you time to create better shots.”

Jimmy Huang, gaffer, China



ARRI's LED ecosystem

Advanced lighting products with intelligent control options

ARRI offers a complete LED ecosystem—a wide range of products, accessories, and features that speed up the lighting workflow and allow more time for creativity. A broad portfolio of high-quality luminaires such as SkyPanel, Orbiter, and L-Series provides reliable tools for any application in the film, TV, still photography, theater, and live event industries.

With the addition of Stellar, the lighting control app from ARRI, using these professional lighting fixtures has become faster, easier, and more intuitive than ever before. Ongoing firmware and LiOS updates for the fixtures complete the system and allow for new, cutting-edge features.





Orbiter®

Illumination | Reshaped

The ARRI Orbiter is a versatile, tunable, and directional LED fixture. Orbiter's six-color light engine ARRI Spectra delivers a wide color gamut and outstanding color rendition across all color temperatures, along with industry-leading, smooth dimming from 100% to 0%. With its changeable optics, Orbiter can transform into many different types of lamphead, including open face, fresnel, projection, soft light, and many more. Orbiter's state-of-the-art technology and multi-functional design optimize it for today's needs as well as for emerging requirements, with endless possibilities for updates, enhancements, and new configurations.



LIOS
Lighting Operating System

ARRI SPECTRA

QLM
Quick Lighting Mount



- Variety of optics: Open Face, Domes, Softboxes, Fresnel and Projection
- ARRI Spectra six-color, wide gamut light engine
- Powerful output for maximum brightness and perfect colors
- Perfectly smooth dimming to zero
- Weatherproof housing
- Integrated color sensor for matching ambient light
- Removable, intuitive control panel



LIOS - powerful software

Packed with amazing features

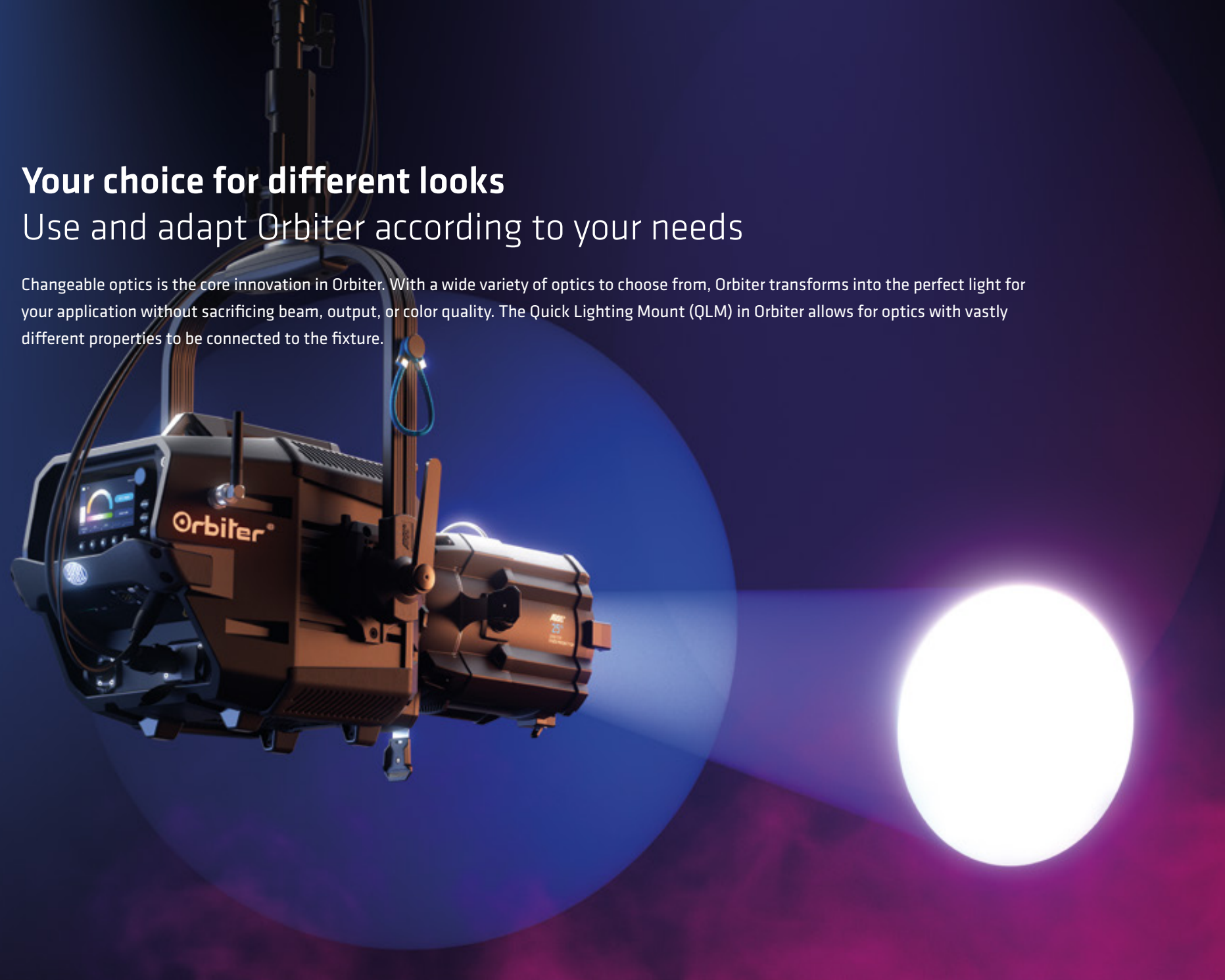
The software powering Orbiter is called LiOS (Lighting Operating System). It amalgamates and expands on the innovative and groundbreaking features of the SkyPanel series, making Orbiter one of the most fully featured luminaires on the market. LiOS offers eight color modes: CCT, HSI, individual color, x/y coordinates, gel, source matching, lighting effects, and the new color sensor mode, which measures ambient light and recreates it through Orbiter's output. Other LiOS features include simplified DMX modes, Sync Mode, that triggers the light output when and how the camera needs it, Cue Mode, which allows for fluid and easy light changes in different lighting modes, storage for hundreds of favorite settings, optics recognition, multi-language support, and many more yet to come.



Your choice for different looks

Use and adapt Orbiter according to your needs

Changeable optics is the core innovation in Orbiter. With a wide variety of optics to choose from, Orbiter transforms into the perfect light for your application without sacrificing beam, output, or color quality. The Quick Lighting Mount (QLM) in Orbiter allows for optics with vastly different properties to be connected to the fixture.



The Fresnel Lens creates a precise light spot with a soft single shadow. It delivers true Fresnel output with a real Gaussian field of light. The large zoom of 15-65° range is fully motorized, which can be controlled locally and remotely. A status LED display shows the current beam angle.



The Orbiter Projection optics 25° and 35° provide unparalleled precision in every detail allowing for crisp projection of a light spot, as well as immaculate gobo projection and precise shutter cuts. The field of light is entirely even and without color aberration.



The Open Face optics produce a high-output, directional beam of light in several different beam angles: 15, 30, and 60°. Perfect for throwing light long distances or providing a broad swath of light.



The Docking Ring allows the attachment of a wide range of compatible optics from various manufacturers, giving the additional option for hard edge projection, focused shutter cuts and also gobo projection.



With its ultra-translucent glass, the Glass Cover allows for full, unrestricted light output without impacting color temperature or quality. It produces a clean and sharp single shadow and is ideal for near distance applications with limited available space where much light is needed.



The Orbiter Dome Mini provides great quality omnidirectional light at a high intensity. The highly translucent material keeps the light output loss to a minimum compared to the usually larger, cloth-based domes. It produces a clean, single soft shadow and is great for near distance applications with limited available space.



The Dome optics are fabric spheres available in three different diameters: small, medium, and large. The dome emits omnidirectional light, great for illuminating a large area with a beautiful, soft quality of light.



The QLM in Orbiter creates a direct mounting point for dedicated Chimera and DoPchoice Softbox products. With easy attachment and no additional optical elements needed, the softboxes allow for a controlled soft light with amazing output.





Made for a large range of applications

Orbiter's powerful output and versatility makes it the perfect directional lighting fixture for different applications – realizing your creative ideas. A wide range of optics and features allow the fixture to be used in a great variety of applications without compromising quality. Markets such as film and television production, broadcast, theater and live entertainment, and even photography are just some examples of environments where Orbiter excels. Orbiter is available in blue/silver and black color version for even more customization.



Broadcast & Media

Orbiter's Projection optics enable broadcasters to have controlled, high-quality light in the studio. The Open Face optic or Softbox option provides either tremendous directional output or a soft wrapping field of light.



Photography

With Orbiter's directional source, hard shadows are attainable with countless color possibilities. Whether bouncing off a surface or pointed directly at the subject, Orbiter will give the output needed with beautiful color rendition. Different Domes and Softboxes convert Orbiter into a great soft light perfect for beauty shots.



Motion Picture

The ability to throw light long distances with Open Face or Projection optics while at the same time being able to serve as a soft light brings the flexibility needed on today's fast paced film sets.



Theater & Live Entertainment

For theaters and live entertainment applications, Orbiter's Projection optics pristine beam quality creates a precise and even circle of light that can be shaped with gobos, cutters, and an iris. The ARRI Spectra light engine generates superior white light and a vast amount of saturated or merely tinted colors.





SKYPANEL®

Soft Lighting | Redefined

The ARRI SkyPanel is an exceptionally versatile LED soft light—compact, fully tuneable, and delivering light of unsurpassed quality and power. In order to accommodate different application areas, the SkyPanel series comes in a range of sizes: the small and portable S30, the mid-range S60, the long-aperture S120, and the super-large S360. SkyPanel C (color) models have a correlated color temperature range between 2,800 K and 10,000 K; full plus and minus green correction can be achieved with the simple turn of a knob. In addition to CCT adjustments, other control options include hue and saturation, gel selection, RGBW, source matching, x/y coordinates, and 16 professional lighting effects programmed into every fixture.



2021
Engineering Emmy®
SkyPanel Development



The soft light for your creativity

Professional lighting accessories for SkyPanel

The SkyPanel was designed to be used primarily as a soft light to illuminate people, although features built into the fixture make it extremely versatile. The interchangeable diffuser panels on the front of the lamphead mean switching from Heavy Diffusion to Lite Diffusion can be done in a matter of seconds. A sizeable range of professional lighting accessories meets different application needs and user preferences. SkyBenders, Eggcrates, Snoots, FlexDoors, Honeycombs, Lightbanks, SNAPGRIDs, SNAPBAGs, Octagons, and Lanterns help shape the light, while mounting yokes and transport cases enable flexible usage on set and safe, easy transportation.



Stellar

The intelligent lighting control app from ARRI

Stellar provides a smart and innovative way to control professional lighting and is available on iOS and Android phones and tablets. Automatically taking care of complex DMX settings and featuring control interfaces with beautifully designed graphics, Stellar reimagines lighting control. Coded intelligence and advanced communication make connecting ARRI LED or third-party fixtures to the app simple and straightforward.



- Control of ARRI and third-party fixtures
- Manually add or swap out fixtures
- Group fixtures with different CCT ranges
- Share, sync, and back up your work
- Brings gels to the L-Series
- Light plot fixture selection
- Auto layout and discovery of fixtures



Photometrics

Tech specs of ARRI lights

The ARRI Photometrics App gives you the ability to quickly reference the photometric characteristics, technical specifications, and more, of all ARRI light fixtures.



ARRI Photometrics App readouts and features:

- Luminous output
- Beam diameter
- Beam angle
- Flood, middle, and spot photometrics
- Luminous distribution graph
- Camera exposure and aperture
- Parameters including color temperature, CRI, protection rating, dimming, dimensions, weight, power draw, lamp holder type, mounting, reflector type, lens type, and scrim size
- Metric and imperial units
- Create projects and save preset fixtures
- Bulb selection
- Compare lampheads
- DMX implementation tables
- DMX conversion calculator
- CCL calculator
- Discontinued product data
- Electronic ballast information



ARRI Approved Certified Pre-Owned program

Affordable, reliable excellence-guaranteed

Working with ARRI's multi-award-winning products is the desire of many filmmakers, photographers, and broadcasters. The ARRI Approved Certified Pre-Owned (CPO) program provides a more cost-effective and yet trustworthy way to fulfill that desire, and for less than you might think. All the products we offer in this program will help you capture beautiful, top-class images, with the reliability and support you expect from ARRI.



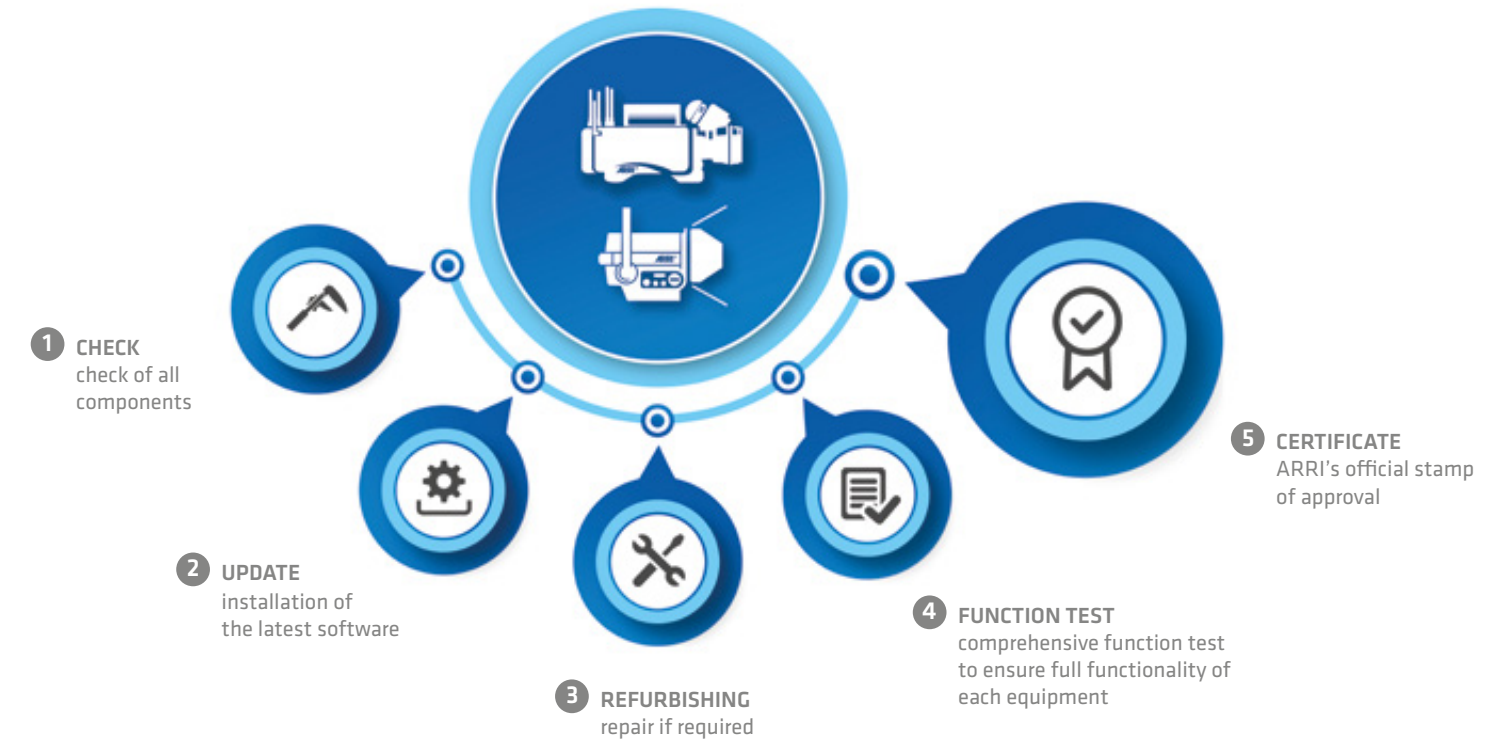
Our wide range of CPO products includes:

- Cameras
- Lenses
- Lighting fixtures
- Camera Stabilizer Systems
- Pro Camera Accessories
- Archive Solutions

ARRI approved quality

All CPO products undergo a thorough check and overhaul

The CPO program makes the world's most advanced image-making tools more affordable, allowing you to invest in selected pre-owned ARRI cameras and lighting fixtures with full confidence that you are not sacrificing performance for price. Every product undergoes a comprehensive check and overhaul of all components at an ARRI Service Center.





ARRI Solutions

Designing and engineering customized production infrastructures

As a specialist integrator, ARRI Solutions brings together ARRI's unique expertise in various fields to create holistic solutions for broadcast, virtual production environments, and more. Competencies include professional lighting and camera systems, the correlation between image science and color management, and state-of-the-art production workflows. Customers are offered a full range of services, from in-depth consultancy and 3D visualization to comprehensive project planning and design, implementation, and training. Every project is supported by a global team of experienced system and electrical engineers, lighting designers, IP specialists, and project managers, underpinned by a worldwide network of industry partners.



ARRI Solutions: Reference projects

Creating innovative, immersive production environments



DARK BAY Studio

The DARK BAY Studio in Babelsberg is one of Europe's largest permanent LED studios for virtual film production. ARRI Solutions was responsible for the overall technical planning and installation of the mixed reality studio, in close collaboration with the client. A curved 55 m x 7 m LED wall forms a dynamic backdrop for the facility, complemented by 70 ARRI SkyPanels that interact with the wall and illuminate the volume. Over 50 powerful ARRI Orbiter lampheads act as a 'ring of fire,' providing versatility for different virtual production environments. Action is captured with the ARRI ALEXA Mini LF camera and customized ARRI Rental ALFA anamorphic lenses.



"The balanced inclusion of all needs from a creative and technological aspect, like direction, camera, lighting, and VFX, were indispensable for us to guarantee the creative intention of the studio. The high level of bundling competence that the ARRI Solutions Group offers was essential for assembling and delivering the studio on time and with quality."

Philipp Klausung, Managing Director, DARK BAY GmbH



© Alex Forge/NETFLIX



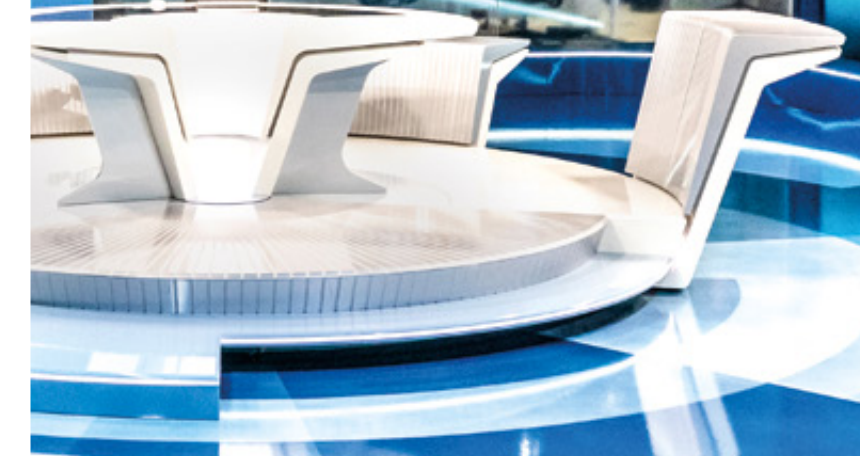
WeltN24

ARRI Solutions equipped two state-of-the-art news studios for WeltN24 in Berlin. The studios are the first to be equipped exclusively with Ethernet/IP-based lighting technology. In combination with other luminaires, 100 SkyPanels from ARRI provide a highly flexible lighting design.

WELT

"With great commitment, we were able to develop workflows together as a team that meet our special requirements as a news broadcaster while, at the same time, optimizing the budget. The product management, including implementation and installation, was carried out at an extremely high level."

Thorsten Prohm, Chief Technical Officer at WeltN24



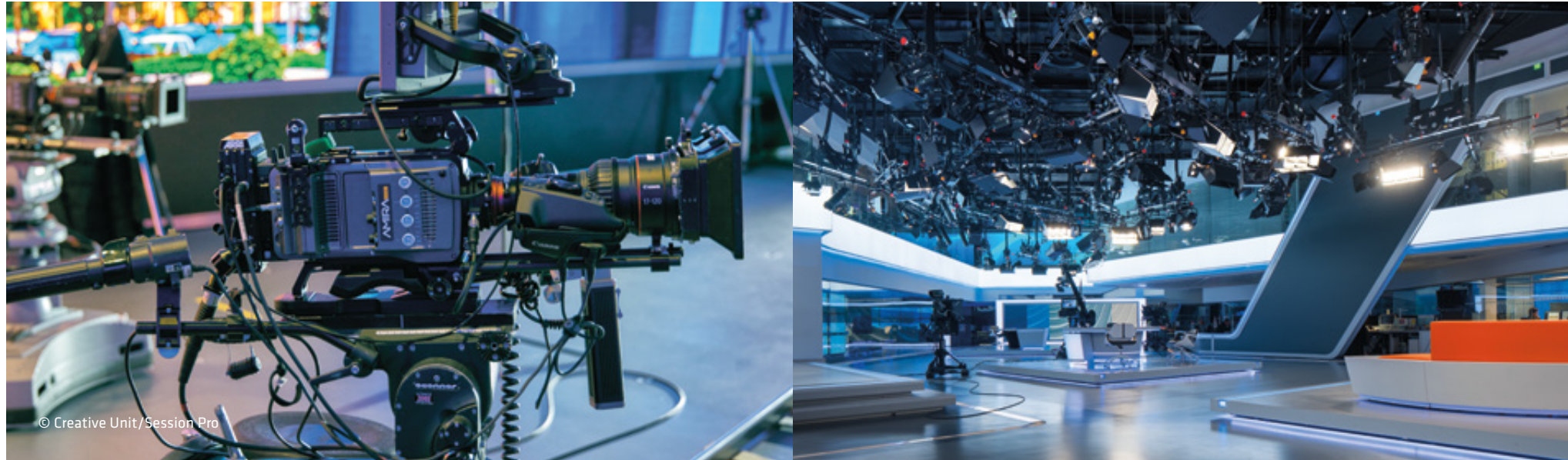
© WeltN24 GmbH/Anne Hufnagl



Broadcast Solutions

Integrated tools, unrivalled expertise

The broadcast and media industry is experiencing a period of extraordinary innovation. Our cross-disciplinary capabilities, together with our knowledge and expertise in state-of-the-art lighting workflows, sets our team apart from the competition. ARRI Solutions provides turnkey lighting solutions for tomorrow's production infrastructures, and the ARRI Multicam System knits a variety of components together to give program-makers flexibility tailored to their diverse needs.



© Creative Unit/Session Pro

Professional system integration

In broadcast and media applications





ARRI LightNet

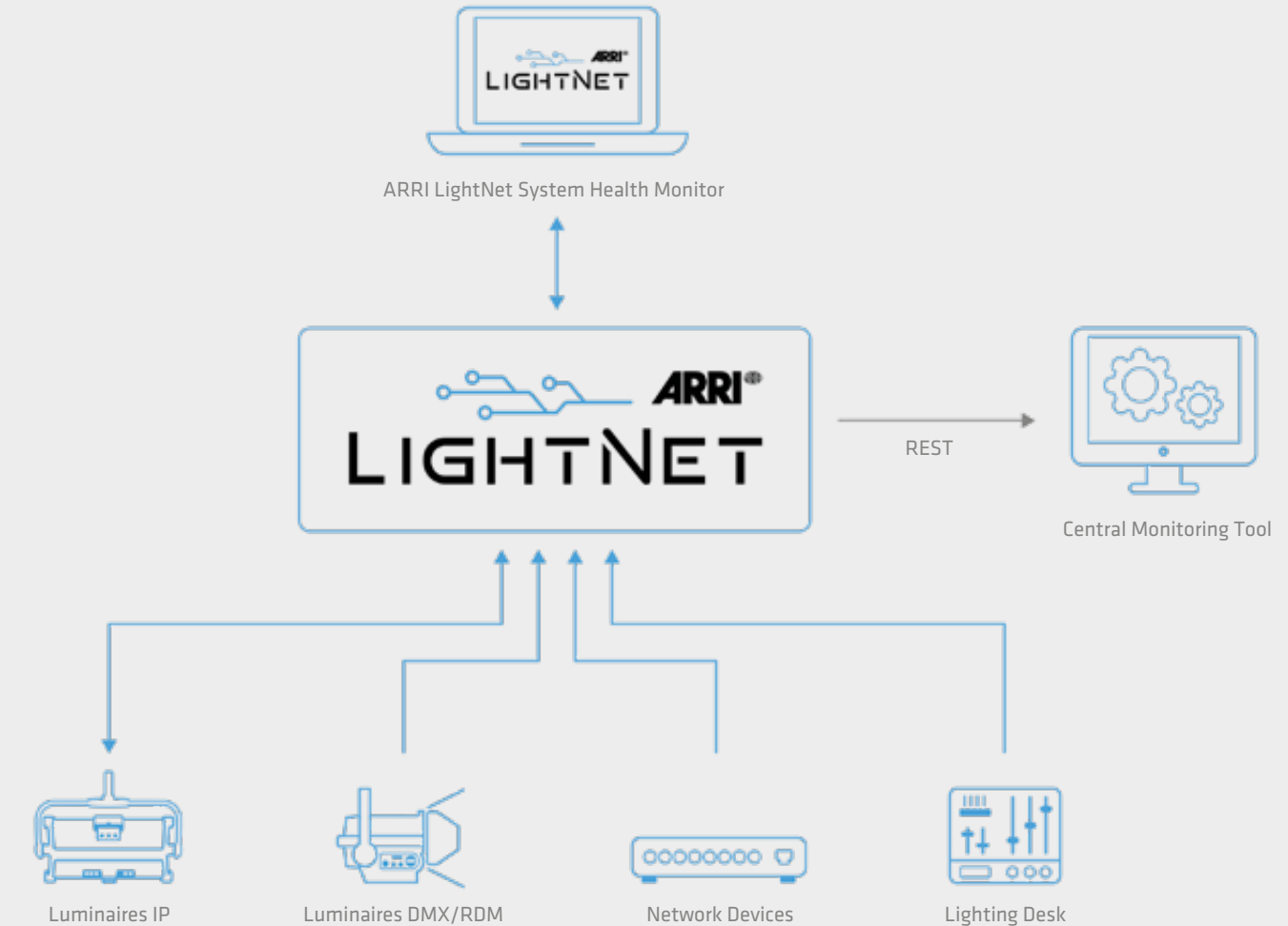
Seamless workflow integration for broadcast lighting systems

ARRI LightNet is a unique software platform designed by ARRI's Solutions Group to offer smart, logical, and at-a-glance centralized monitoring, fault-finding, and management of broadcast studio lighting networks from anywhere. ARRI LightNet is compatible with the hardware of multiple manufacturers and established lighting protocols, so it can be retrofitted into existing facilities and lighting ecosystems as easily as it can be specified for new builds.



Why choose ARRI LightNet?

- Holistic device monitoring for lighting networks (cross-manufacturer, cross-device)
- Clear and logical status information overview via dedicated front-end interface or a broadcast facility's central monitoring system
- Central/decentral system architecture ensures full flexibility with resource-saving front end and high-performance back end



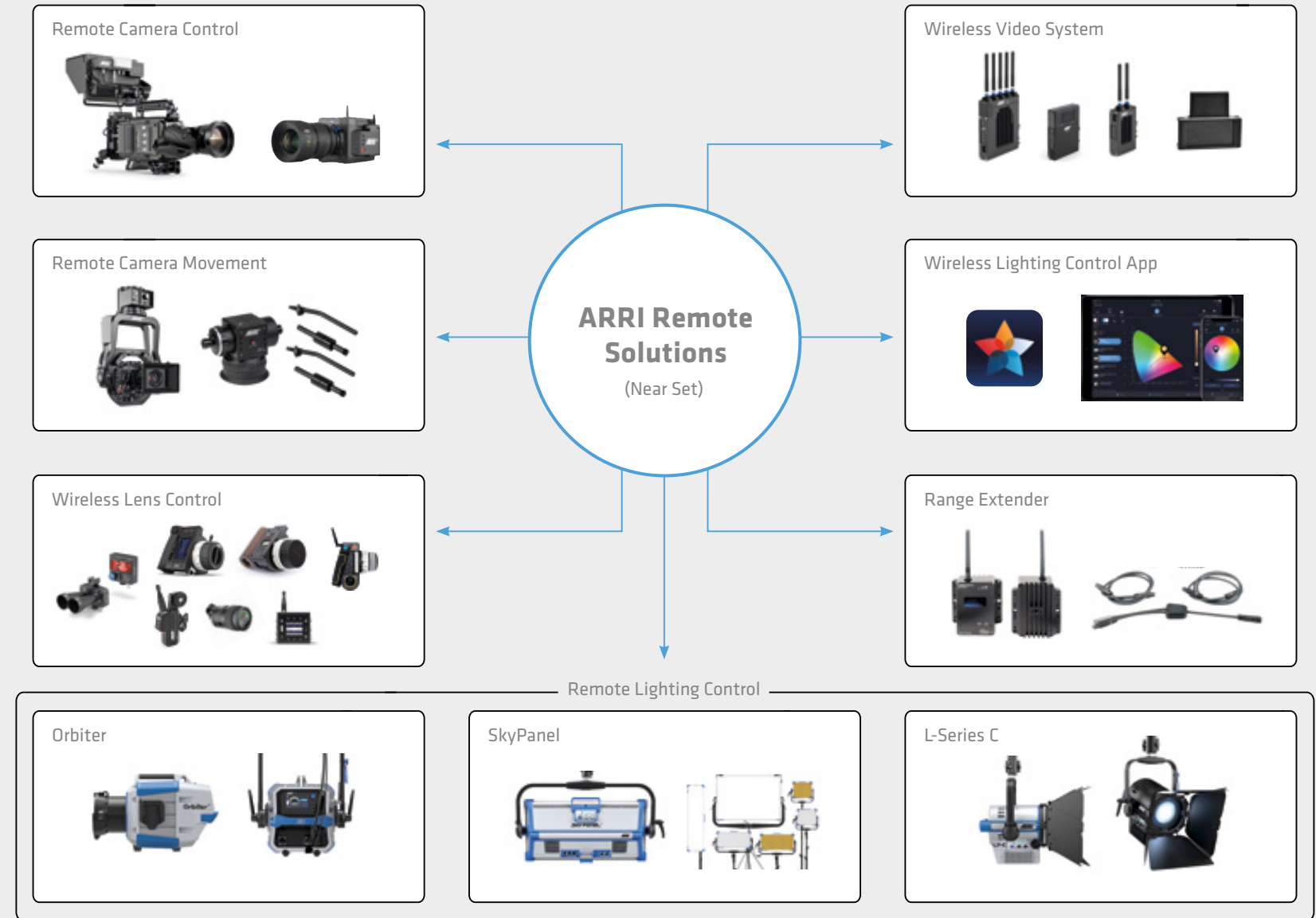
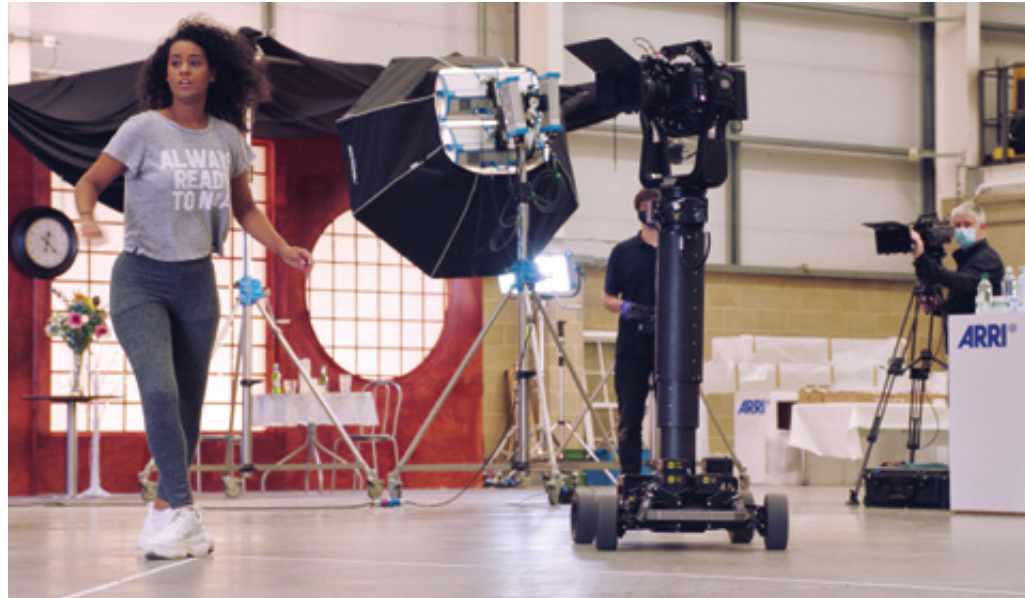
This trailblazing product observes and displays all elements across a broadcast studio lighting network—luminaires, consoles, network switches, splitters, nodes, etc.—showing all the relevant data in real time on a single interface. The software thereby allows users and technicians to work harmoniously in parallel while accessing and managing different aspects of the network.



Remote Solutions

A remote production ecosystem for film, TV, and live events

Shoot cinema quality in any environment and from any location, controlling cameras and lights wirelessly, with ARRI Remote Solutions for broadcast, feature films, and live events. The remote production ecosystem comprises a variety of tools that allow crews to maintain technical and creative control of lighting and camerawork, including stunning camera movement, on a socially distanced set. The remote head gives the talent enough space and freedom to perform at a safe distance from the crew, with crew members able to operate the remote head and perform functions such as pulling focus while being up to 3,000 meters away from the set.





Continuous lighting for photography and video

What you see is what you get

With deep roots in the film and TV market, ARRI understands that continuous light sources bring enormous benefits to creativity and efficiency on set—benefits that extend to the world of still life photography. The versatile features and accessories of ARRI LED fixtures, as well as the high-quality light output, offer almost unlimited creative possibilities, allowing photographers to explore as many looks and colors as they can imagine.



Both images on the right
© John Engstrom



Advantages of continuous lighting:

- Bright, continuous light output
- Capture photos and short videos with the same setup
- See the setup as it will be on camera
- Ability to create in-camera effects
- Natural skin tones
- Countless color possibilities
- Perfect shadows
- Abundant selection of lighting accessories and modifiers
- Turn from soft light to hard shadows in seconds

Online support for your shoot and post workflow

Free tools, tips, apps, and learning resources

ARRI's many years of experience producing the widest range of professional filmmaking tools available from any manufacturer, its direct contact with producers and creatives, and its knowledge of postproduction, all give the company a unique insight into every stage of the production chain. This, combined with ARRI's system approach, enables it to develop functional and educational resources that help filmmakers get the most out of their technology. A range of free-of-charge tools, apps, and tutorials can be found in the Learn & Help section of ARRI's website.



Frame Line & Lens Illumination Tool

A single online tool for creating custom frame lines for ARRI cameras and for checking how different lenses illuminate different ARRI sensor sizes, recording formats, target aspect ratios, and frame lines.



ARRI YouTube Channel

Interactive webinars, filmmaker interviews, and more

To help keep you inspired, ARRI populates its YouTube channel with a wide range of educational, behind-the-scenes, and creative video content. Whether it's a tech talk on a specific product, an interview with a cinematographer about an upcoming movie, or a bulletin from an event we're attending, our playlists will keep you up to date on the latest news and equipment.



Interactive webinars

The ARRI TECH TALK Live series covers a broad spectrum of different topics, including technical deep dives, equipment tutorials, and discussions with industry professionals, all with the option of getting your questions answered live on air. The playlist is an ever-growing library of previous talks.



Discover the webinars



Filmmaker interviews

ARRI's working relationships with filmmakers can span their entire careers. Often, they are kind enough to sit down with us and discuss their latest project, their creative approach, or their experiences with our equipment. The playlist is crammed with tips and insights from top DPs.



Discover the interviews



Other playlists

The ARRI Channel hosts a rich and diverse selection of other video content: showreels, demo shoots, historical pieces, tech tips, hardware and software guides, and behind-the-scenes material, to name a few. Time spent exploring our playlists is time spent developing your knowledge and skills.



Discover all playlists

ARRI Academy

Strengthen your knowledge

Certified training courses, bespoke one-on-one tuition, masterclasses, and close-up events

Offering a wide range of multi-day training courses, individual sessions, and educational events in different countries and languages worldwide, ARRI Academy is the best route for users of all abilities to gain hands-on knowledge of ARRI products and workflows, and build their on-set confidence.



Certified User Training

Learn everything from on-set techniques to postproduction workflows. Taught by ARRI-trained industry professionals, these online and in-person courses provide unrivalled insight into the full possibilities of working with ARRI camera systems, lenses, lights, and accessories.



Advanced Service Training

ARRI Service provides online training for professional camera and lighting technicians, owner-operators, and distributors—with or without technical experience. The training courses are designed to transfer detailed knowledge about the service and maintenance of all different types of ARRI products.



Preregistration

You can preregister for one or more of ARRI's Certified User and Service Training courses. Let us know how and where we can help; specify your products, time frame, and preferred locations. You can register today without any obligation and, depending on the regional demand, we will schedule a training near you.



ARRI Certified Film School Accreditation Program

ARRI Academy now offers an educational program for film schools, providing benefits for both the school and its students. Program members receive exclusive access to educational material on ARRI products and workflows. Film schools become officially certified by ARRI and can issue certificates to their individual students.



ARRI Service

Worldwide technical support for ARRI products



Service requests

Start online and contact our technical service. The ARRI service team is here to help.



Service parts

Online spare part search. The spare parts catalogue is the basis for identifying and ordering a spare part required for maintenance and repairs of ARRI Camera Systems products.



Service locations

The ARRI service center network provides a great selection of nearby locations for ARRI certified repairs. Find your nearest service center for ARRI products here.



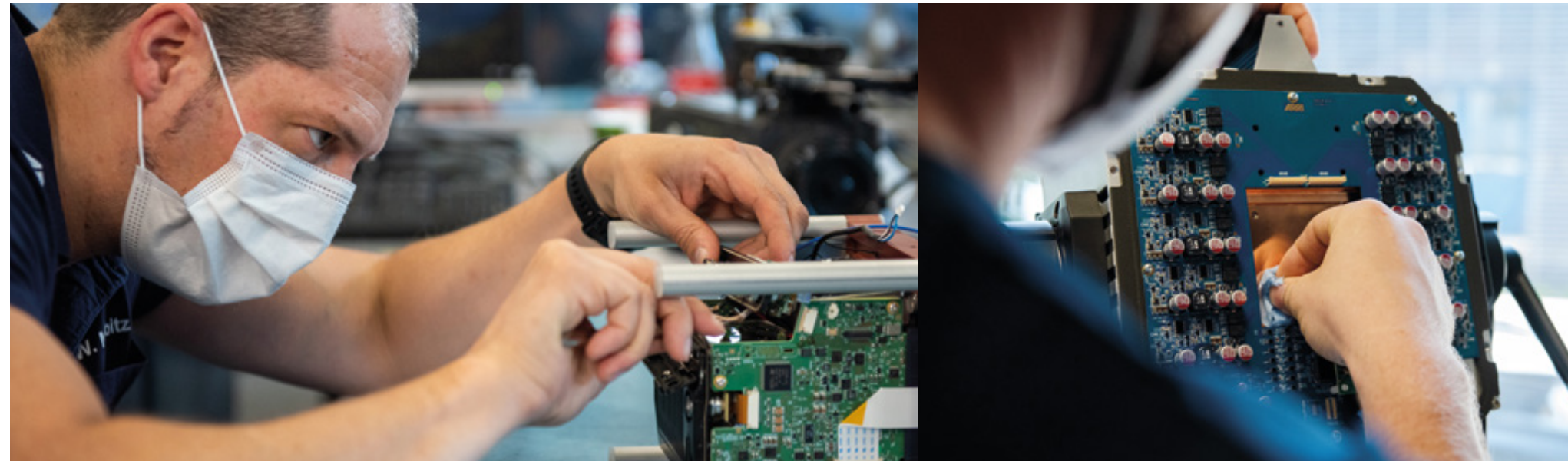
Lens service

ARRI has exclusive-level lens service available in Burbank, Munich, Beijing, and Hong Kong. All service centers provide rapid response and cutting-edge support for film and television production hotspots around the world.



Advanced service training

Service training is also available for many products.



Built to last

Extra peace of mind with extended warranties

ARRI products are renowned for their rugged durability, but rough and demanding conditions on set can necessitate maintenance from time to time. Extended warranty packages offer a fixed cost of ownership, minimized downtime, and a level of service that goes beyond the standard.



Purchase a **one-year extended warranty** along with your camera, or later through any official ARRI point of sale: subsidiaries, distributors, or resellers.



Register your AMIRA, ALEXA Mini or ALEXA within one month of purchase and get a **free six-month extended warranty**.



Register now



ARRI offers a three-year extended warranty for its LED fixtures, which is included in the purchase price without any extra costs or further application process. LED accessories are not included.

This Product Highlights and Solutions brochure (80.0047578) is published by Arnold & Richter Cine Technik, September 2022 © ARRI/2022. Technical data and offerings are subject to change without notice. All rights reserved. Without any warranty. Not binding 09/2022. ARRI, the ARRI logo, ALEXA Mini, ALEXA LF, ALEXA Mini LF, ALEXA SXT W, AMIRA, Signature Prime, Signature Zoom, TRINITY, LiOS, L-Series, Orbiter, Quick Lighting Mount, QLM, SkyPanel, SKYPANEL, and Stellar as well as the blue/silver color combination are registered trademarks of Arnold & Richter Cine Technik GmbH & Co. Betriebs KG

Photo courtesy - front cover/SkyPanel image: Brendan Spinec



www.arri.com