

# Operations Manual

## Demon Salt Water Range

STORM 415V SALT WATER

STORM 415V SALT WATER CABINET

HURRICANE D1 SALT WATER

### Declaration of Conformity (E.H.S.R)

We, Demon International Limited of Abbots Close, Lee Mill Industrial Estate, Ivybridge, Devon, PL21 9GA Declare this machine must be operated in accordance with the operation and safety instructions as supplied with this machine. This machine is manufactured in accordance with the following standards.

HSE PVB PM - BS415 Part 1 - BS5415 Section 2.4 1986

This instruction manual is relevant only to the following machine and will not be kept updated unless specifically requested by the customer. However any changes to the operating procedure or changes which might affect the safety of this machine will be notified to the registered owner of this machine only.

Machine Type	
Serial Number	
Voltage	
Working Pressure	
Date of Supply	

# Manual Contents

---

<b>Page 3</b>	Technical Specifications
<b>Page 4</b>	Preparation & Operation
<b>Page 7</b>	Fault Finder
<b>Page 9</b>	General Arrangement of Machines
<b>Page 13</b>	Machine Pump
<b>Page 15</b>	Machine Unloader
<b>Page 17</b>	Machine Wiring
<b>Page 19</b>	Machine Lance & Hoses

# Technical Specifications

---

## Storm 415v Salt Water & Cabinet

Pump	RK-SS 15-20
Pump pressure	200 bar/2900psi
Flow rate	15lpm
HP Nozzle	2504
Unloader	VRSS
Motor	MTR00220
Voltage	415v

## Hurricane D1 Salt Water

Engine	Yanmar L100
Pump	RK-SS 15-20
Pressure	200 bar/2900psi
Flow	15lpm
HP Nozzle	2504
Gearbox	2:1 Reduction 1690
Unloader	VRSS
Pump Oil	10W/40
Gearbox Oil	EP90

# Preparation

---

## Water Supply:

- a. Ensure there is an adequate water supply either from the mains or a reservoir.
- b. Attach water supply hoses to suitable tap or immerse end of hose into reservoir.  
(The 110 mesh filter supplied should be used when sucking from a reservoir.)

**NOTE: ONLY CLEAN FILTERED WATER SHOULD BE USED.**

## Hoses:

- a. Attach the high pressure hose to the pump connection.
- b. Attach the spray gun to opposite end of the high pressure hose.
- c. Ensure that the regulator nozzle on the end of the spray lance is **CLOSED**.

## OPERATION

(Check that electric motor is switched '**OFF**')

- a. Plug into a suitable electrical source. (Not an extension lead)
- b. Turn on water supply.
- c. Ensure that the trigger is '**OPEN**' to vent air from the pump.
- d. Switch '**ON**' electric motor.
- e. Open regulator nozzle slightly and direct lance on surface to be cleaned. Press operating trigger.
- f. Adjust pressure regulator as required to obtain working pressure.
- g. NOTE: The high pressure water will cause the gun to 'kick'. Make sure you have a firm grip of the gun and lance.
- h. On completion of the operation switch '**OFF**' electric motor and unplug from power supply.
- i. Turn '**OFF**' water supply.
- j. Release residual pressure in gun and lance by operating trigger.

# Operating Hints

---

- a. During very cold weather it is most important to protect the machine against freezing. DO NOT operate machine should it become frozen. Move it to a warm area and allow to thaw naturally.
- b. Check all hoses and couplings for leaks, tighten where necessary.

Leaving the pressure washer on by-pass for prolonged periods without operating the lance will cause the water in the pump to heat up. This heat build up may damage the seals and valves in the pump.

## **WHEN USING CLEANING AGENTS**

- a. Set machine up for water only.
- b. Connect detergent hose to machine and place filter end into detergent reservoir. Unscrew the adjustable nozzle on the end of the lance to reduce the pressure to 500psi. The chemical will now be automatically injected into the water.
- c. On completion of work, flush through hose and gun with clean water to remove any residual detergent.

## **SERVICING**

The Storm range require little maintenance apart from checking the oil level at least every week and changing the oil should it turn white or it is six months old. If the oil turns white it is due only to water entering the pump via the dipstick, which has a breather hole drilled through. The design of the pump does not allow water from the pump to gain access to the gearbox drive.

Should the performance be reduced to a level where the jet is ineffective contact the service department to ascertain the correct remedial repair work.

If using sea water flush after use with fresh water and spray any 3 way valves with silicone spray to lubricate valve.

# Operating Instructions

## SAFETY

- i. **A Residual Current Device (R.C.D.) or Earth Leakage Trip** must be used with this machine.
- ii. **Water at high pressure is dangerous and can cause serious injury. This machine is to be used with great caution.**
- a. **NEVER** point the high pressure spray jet at any person, animal, glass or any other material which may shatter.
- b. **PREVENT** any over-spray from injuring other people or damaging property.
- c. **DO NOT** even try to use a pressure washer on machinery or electrical equipment that is connected in any way to the mains supply. (all switches in the off position, pull out all plugs and if possible remove fuses). Cover or seal electric motors and fittings to prevent entry of water.
- d. **ALWAYS** when using machine:-
  - wear safety goggles and helmet or helmet with a visor.
  - wear waterproof clothing and gloves.
  - take particular care with detergents and chemicals.
- e. **NEVER** attempt to disconnect any hose with pressure in it or allow the hose to be flattened or kinked.
- f. **DO NOT** use a high pressure hose from a ladder. Use a platform tower or proper scaffolding.
- g. **CHECK** that your supply voltage agrees with that shown on the machine.
- h. If an extension lead is used unwind all cable off the drum to stop overheating. The right size of extension lead must be used, failure to do so will result in switch failure or motor damage. Demon strongly recommend the use of extension hoses opposed to extension leads. Warranty claims for damaged switches and motors used on extension leads will not be allowed. Ask the service department if in doubt.
- i. **DO ALL** you can to keep plugs and sockets in a dry place or covered to prevent entry of water.
- j. Where a cable is found to be damaged, the power must be switched off and the plug removed before attempting to remove the equipment.

## Fault Finder

---

FAULT	CAUSE	REMEDY
Machine stops suddenly Or will not start.	Blown fuse.	Check mains power supply, re- place fuse. Wait until unit cools down before resetting switch.
Sudden pressure loss.	Water supply failed.	Check water supply.
Low pressure	HP nozzle worn or unloader set Incorrectly.	Replace HP nozzle. Set unloader to correct setting.
Low pressure with noise and vibration.	Valves worn or blocked. Piston seals worn. Pump sucking air.	Clean/replace as required. Replace. Check water supply pipe and un- ions.
Pump will not by-pass.	Non return valve dirty or jammed.	Clean or replace.
Water drips from pump box.	Pump seals worn.	Replace.
Oil drips from pump bottom.	Oil seal worn.	Replace.
Oil is milky in colour.	Water ingress through oil filter plug.	Rinse pump out and replace oil.
<b>IF IN DOUBT ASK—OUR ADVICE IS FREE AND CAN SAVE YOU MONEY</b>		

## I can't get the pressure to where it used to be — where do I start?



Well by now you should know to check the nozzle - assuming that is correct and you still have no or low pressure the golden rule is to connect the pump to the mains water supply - whichever machine you are testing start with a good mains feed.

**1. With the gun and lance connected turn the tap on - can you see a leak?** If so there is your problem, if water can leak out air can get in and the pump won't produce pressure - simple as that. (Leaks from underneath the pump are either worn seals or a cracked piston - strip to find out which.)

**Remedy:** Fix leak or replace seals or piston.

**2. Check enough flow of water can get into the pump.** Make sure all the filters are clean. The new Tempest hot water machines have a fine filter which will remove most solids. All Demon machines are now double filtered. Have you checked both of them?

**Remedy:** Strip and inspect filters.

**3. There are no leak's what next?** With the pump switched off pull the trigger, water will spray out. Keeping the trigger pulled switch the pump on, if the water spray does not improve the valves are the fault. Either worn out or dirty. Strip and inspect. (The high pressure hose will also vibrate on the ground.)

**Remedy:** Replace or clean valves.

**4. The valves are OK there are no leaks but it still won't get up to pressure – what next?** The unloader valve piston and seat are damaged or worn allowing some of the water to circulate around the cylinder head - strip and inspect, you will see any damage.

**Remedy:** Strip unloader and inspect - replace damaged parts.

**5. My cold water pressure washer does not feel as powerful as it used to be but the pressure gauge shows the correct pressure. What causes this?** The chemical pick-up has a nozzle of 1.8mm or 2.0mm size and can get partially blocked. This will allow some but not all of the water to flow to the lance.

**Remedy:** Strip and remove the blockage.

**6. The pressure remains high even when I let go of the trigger** and the engine or motor is struggling or stalling. The non- return valve in the unloader is damaged or jammed.

**Remedy:** Strip and clean or replace.

**Demon Technical Support 01752 - 690690**



# Storm Salt Water General Arrangement



Valve Kit ARKIT 2514

Oil Seal Kit ARKIT 2528

Piston Kit ARKIT 2515

Seal Kit ARKIT 2516

9mtr Hose HH00030MVG

# Hurricane D1 Salt Water General Arrangement

---



Pump - ARRK-SS15.20

Unloader - ARVRSS

Seal Kit - ARKIT2516

Piston Kit - ARKIT 2515

Valve Kit - ARKIT2514

Oil Seal Kit - ARKIT 2528

Wheel - Wheel400

Support Rings - ARKIT1829

Pressure Gauge - DEM20620

9mtr hose - HH00030MVG

# Warranty

---

**This warranty covers the cost of all replacement parts and labour charges incurred. It does not cover the cost of transport or carriage. It is the owners responsibility to return the machine to a service depot or pay the travelling expenses of a service engineer to attend. Demon International's decision in warranty matters is final and binding.**

Demon International Ltd undertake to repair or replace, any component which may fail due to a manufacturing fault within a period of 12 months from the date of purchase, provided that any fault or damage was not sustained by;

- A. Lack of regular and proper maintenance, user negligence, misuse, or damage caused by ice and frost.
- B. The effects of contaminated fuel or water, the use of non-approved chemicals or an insufficient or unsuitable electrical supply.
- C. The effects of un-authorized modification and use.
- D. Compression damage to high pressure hose.(HOSES WARRANTED FOR 1 MONTH ONLY)
- E. Worn out items considered fair wear and tear.

Parts which may or may not wear out during the first year and which are considered service items which will need replacing from time to time: High pressure nozzle, lance, trigger, hoses, fuel nozzle, fuel filter, piston seals, valves, unloader seats and seals, water filter, non-return valve, chemical barbs, chemical pipes and pump oil seals.

It is the owners responsibility to ensure the Pressure Washer is kept in a safe and suitable environment and any faults reported by operatives to be rectified at the earliest possible date.

It is the operators responsibility to check the Pressure Washer for any faults and report them immediately. The Pressure Washer must be used in accordance with the manufacturers specifications and guidelines.

Demon International Ltd undertake to use the highest quality components available during manufacture, but cannot be held responsible for any undue consequence arising from the use of there Pressure Washer.

This warranty is given to the original purchaser only and is not transferable without the fully authorised and written consent of Demon International Ltd.

# Warranty Procedure

---

## End Users

### **If your machine develops a problem:**

1. Phone Demon for advice with the model and serial number to hand.
2. Describe fully the problem as best you can.
3. If the problem cannot be resolved over the phone then the machine can be booked in for repair and if the faults are covered by the warranty the repair will be carried out free of charge.
4. If you cannot bring the machine in for repair then we will despatch an engineer. If the fault is covered by the warranty then we will not charge for labour or spares used, however the transport charge will be payable whether or not the repair is warranty.

## Hire Centres and Dealers

### **If your machine develops a problem:**

1. Phone Demon for advice with the model and serial number to hand.
2. Describe fully the problem.
3. We will advise you on the best course of action, however if parts are required you must raise a purchase order number to cover the parts. When the parts are fitted they must be returned for examination before a credit note is issued.
4. If you are unable to repair the machine then we will despatch an engineer to carry out the repair. We will need a purchase order to cover the cost of transport to and from the site and for parts and labour if the repair is not covered under the warranty.
5. If required Demon will arrange for a carrier to collect a damaged machine, if the warranty claim is valid we will pay this cost, if not it will be charged to the customer.

For parts warranty ring Demon and request a warranty claim form faxed to you. This form must accompany any returned parts.

## **Notes:**

You will not invalidate the warranty by investigating faults and repairing them yourself providing you follow our advice. Hire Centres and Dealers are expected to carry out all repairs themselves with Demon crediting faulty parts upon receipt and inspection.

**Spare parts fitted to machines are guaranteed for 1 month only or the remainder of the warranty period whichever is longer.**

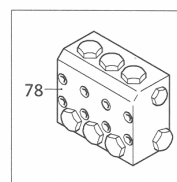
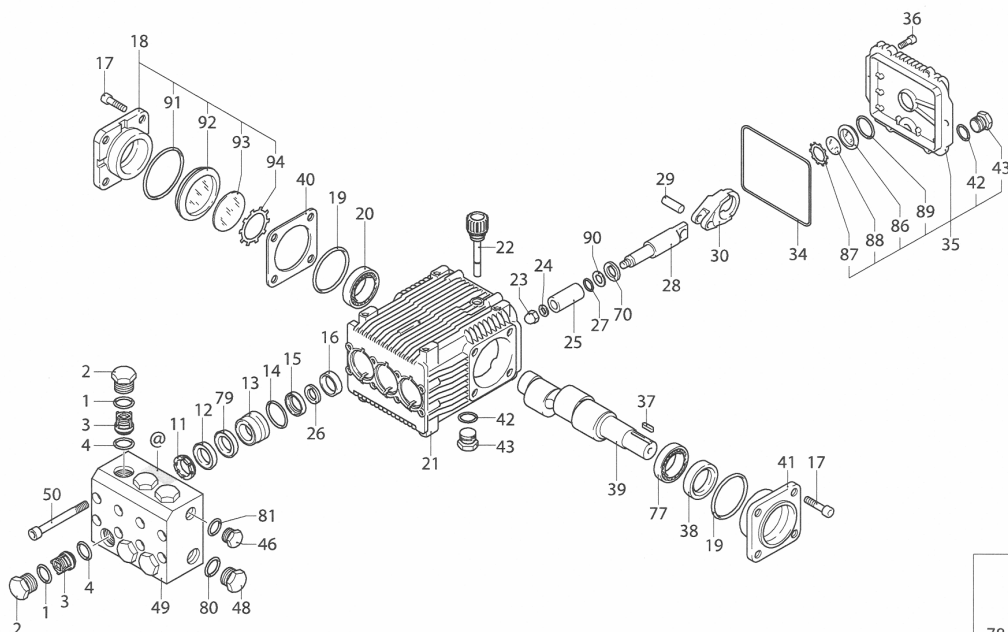
**Pump RK-SS 15-20 for ALL Saltwater models**  
**Complete Pump: ARRK-SS15.20N**

**RK-SS**

VERSION

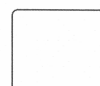
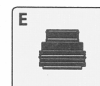
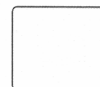
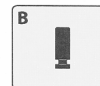
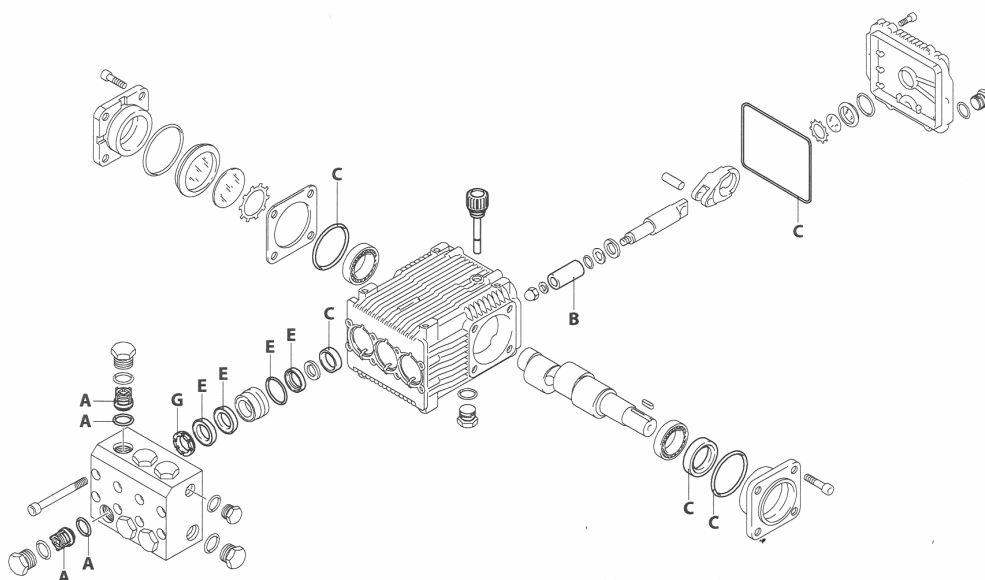
**N 1450**rpm

ø 24x30 mm



UN003285-AQ

**KIT RICAMBI / PART KITS**



(2348600)

UN003286-DU

202

sp\_14030\_RK-SS\_N



# Pump RK-SS 15-20 for ALL Saltwater models

## Complete Pump: ARRK-SS15.20N

### 234 Series

RK-SS 1450 rpm N version ø 24x30 mm

11.11 (20958) 21.15 (21368)  
13.17 (20959)  
15.15 (20960)



Pos.	Cod.	Denominazione	Description	Qt	Note	Pos.	Cod.	Denominazione	Description	Qt	Note
1	960161	Guarnizione OR Ø 17,86x2,62	O-ring	6	Viton	43	2340350	Tappo 3/8" G	Plug	2	C=20Nm
2	2340030	Tappo	Plug	6	☉ C=50Nm	46	2340050	Tappo 3/8" NPT	Plug	1	
3	2349050	Valvola completa	Complete valve	6			2340350	Tappo 3/8" G	Plug	1	C=25Nm
4	880831	Guarnizione OR Ø 15,54x2,62	O-ring	6	Viton		2340040	Tappo 3/8" NPT	Plug	1	
11	960110	Anello appoggio Ø 18	Ring	3	○ □ ☉	48	2340360	Tappo 1/2" G	Plug	1	C=40Nm
	840320	Anello appoggio Ø 22	Ring	3	✖		2340020	Testa	Head	1	✖ NPT
12	880321	Guarnizione Ø 18	Gasket	3	○ □ ☉ ☒	49	2340370	Testa	Head	1	○ □ ☉ ☒ GAS
	840331	Guarnizione Ø 22	Gasket	3	✖ ☒		2340340	Testa	Head	1	✖ GAS
13	2340140	Guida pistone Ø 18	Piston guide	3	○ □ ☉	50	1383440	Vite TCEI M8x70	Screw	8	C=20Nm
	2340420	Guida pistone Ø 22	Piston guide	3	✖	70	2340190	Disco	Plate	3	
14	961241	Guarnizione OR Ø 31,47x1,78	O-ring	3	Viton	77	1383140	Cuscinetto	Bearing	1	
15	880331	Guarnizione Ø 18	Gasket	3	○ □ ☉ ☒	78	2349202	Premontaggio testa	Head assembly	1	✖ NPT
	2340410	Guarnizione Ø 22	Gasket	3	✖ ☒		2349203	Premontaggio testa	Head assembly	1	○ □ ☉ ☒ GAS
16	1383130	Anello tenuta	Ring	3		2349205	Premontaggio testa	Head assembly	1	✖ GAS	
17	2340240	Vite TCEI M8x16	Screw	8	C=20Nm Inox	79	2340310	Anello antiestrusione	Ring	3	○ □ ☉
18	2349011	Coperchio	Cover	1			2340330	Anello antiestrusione	Ring	3	✖
19	640030	Guarnizione OR Ø 59,99x2,62	O-ring	2		80	180102	Guarnizione OR Ø 17,5x2	O-ring	1	Viton
20	2280340	Cuscinetto	Bearing	1		81	740291	Guarnizione OR Ø 14x1,78	O-ring	1	Viton
21	2340260	Corpo pompa	Pump body	1		86	1260250	Indicatore livello	Level gauge	1	
22	880130	Tappo	Plug	1		87	1260430	Anello	Ring	1	
23	2340060	Dado	Nut	3	☉ C=10Nm	88	1780690	Disco	Plate	1	
24	2340200	Rondella	Washer	3		89	1140450	Guarnizione OR Ø 20,24x2,62	O-ring	1	
25	1383230	Pistone Ø 18	Piston	3	○ □ ☉	90	1080550	Anello antiestrusione	Ring	3	
	1383340	Pistone Ø 22	Piston	3	✖	91	100410	Guarnizione OR Ø 34,6x2,62	O-ring	1	
26	2340110	Distanziale Ø 18	Spacer	3	○ □ ☉	92	1941270	Indicatore livello	Level gauge	1	
	2340430	Distanziale Ø 22	Spacer	3	✖	93	1941260	Disco	Plate	1	
27	480482	Guarnizione OR Ø 4,48x1,78	O-ring	3	Viton	94	1941290	Anello	Ring	1	
28	1383240	Pistone di guida	Piston	3							
29	1380060	Spina	Pin	3							
30	1383020	Biella bronzo	Connecting-rod	3							
34	1780510	Guarnizione OR Ø 106x3	O-ring	1							
35	2349010	Coperchio completo	Cover	1							
36	2340250	Vite TCEI M6x14	Screw	6	C=7Nm						
37	1380520	Linguetta	Key	1							
38	180340	Anello tenuta	Ring	1	(a)						
39	2280100	Albero marcato 5	Shaft	1	○						
	2280080	Albero marcato 3	Shaft	1	□						
	2280060	Albero marcato 1	Shaft	1	☉						
	2280070	Albero marcato 2	Shaft	1	✖						
40	1380130	Spessore 0,19 mm	Shim 0.19 mm	1÷3							
41	2340280	Supporto cuscinetto aperto	Support	1							
42	740290	Guarnizione OR Ø 14x1,78	O-ring	2							

### KIT RICAMBI - PART KITS

A=KIT 2514 valvole valves		B=KIT 2515 ø 18 pistoni pistons		B=KIT 2526 ø 22 pistoni pistons		C=KIT 2528 tenute olio oil seals	
Pos.	Q.ty	Pos.	Q.ty	Pos.	Q.ty	Pos.	Q.ty
3	6	25	3	25	3	16	3
4	6					19	2
						34	1
						38	1

E=KIT 2516 ø 18 tenute acqua water seals		E=KIT 2527 ø 22 tenute acqua water seals		G=KIT 1829 ø 18 anelli appoggio support rings		G=KIT 1816 ø 22 anelli appoggio support rings	
Pos.	Q.ty	Pos.	Q.ty	Pos.	Q.ty	Pos.	Q.ty
12	3	12	3	11	3	11	3
14	3	14	3				
15	3	15	3				
79	3	79	3				

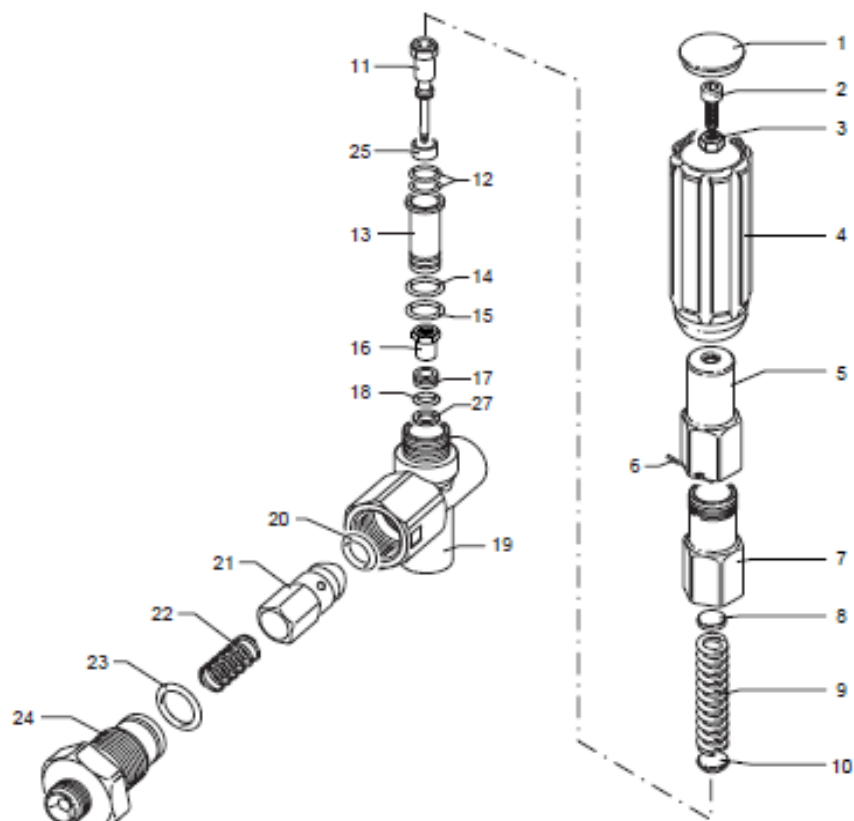
### SIMBOLOGIA - SYMBOLS

○ Per / For RK-SS 11.11 N cod. 20958  
☐ Per / For RK-SS 13.17 N cod. 20959  
☉ Per / For RK-SS 15.15 N cod. 20959  
✱ Per / For RK-SS 21.15 N cod. 21368

- C Tolleranza coppia di serraggio +0÷-10% / Tightening torque tolerance +0÷-10%
- ☉ Avvitare con Loxeal 55-14 / Screw with Loxeal 55-14
- ☒ Lubrificare con grasso Molykote PG54 solo sul diametro INTERNO / Lubricate with grease Molykote PG54 on the INNER diameter only
- (a) Montare anello tenuta con attrezzo cod. 2281010 / Fit the seal with tool code nr. 2281010
- GAS Filettatura gas / Gas thread
- NPT Filettatura NPT / NPT thread
- @ Posizionamento targa di identificazione / Identification plate positioning

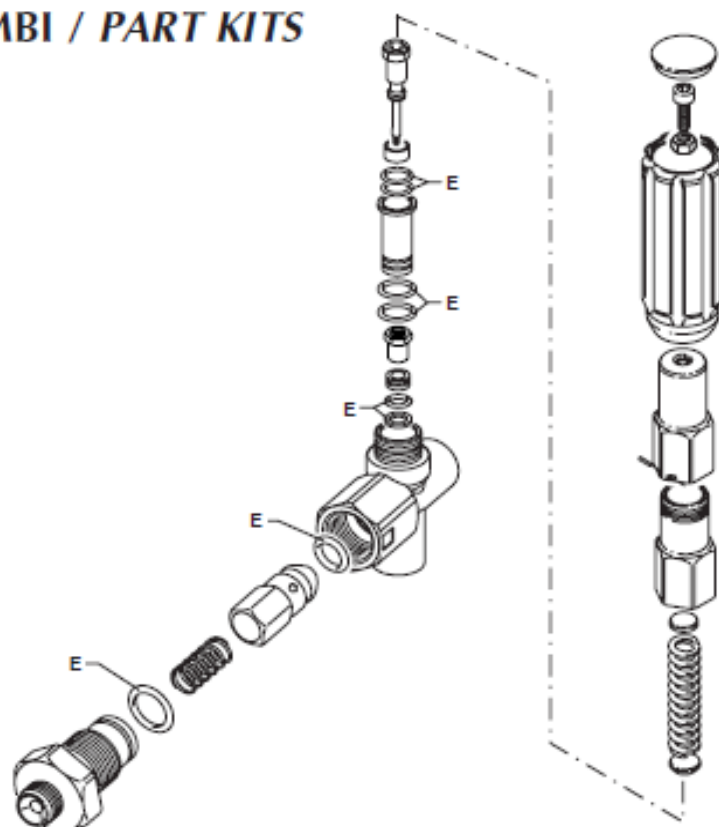
Olio - Oil	
Tipo / Type	Quantità / Quantity
SAE 75W90	0,415 Kg

# VR-SS



UN001203-GC

## KIT RICAMBI / PART KITS



UN001204-GC

**Unloader VRSS for ALL Saltwater models**  
**Complete Unloader: ARVRSS**

# VR-SS



Pos.	Cod. Part n°	Denominazione	Description	Q.tà Q.ty	Note Vedi / See	Pos.	Cod. Part n°	Denominazione	Description	Q.tà Q.ty	Note Vedi / See
1	1560580	Tappo manopola	Cover	1							
2	394650	Vite TCEI M 8x25	Screw	1							
3	380244	Dado M 8	Nut	1							
4	1560400	Manopola	Handle	1							
5	2540060	Vite di regolazione	Screw	1							
6	1080070	Spina	Pin	1							
7	2540050	Guida molla	Spring guide	1							
8	2540070	Plattello superiore	Upper plate	1							
9	2540040	Molla	Spring	1							
10	2540080	Plattello inferiore	Lower plate	1							
11	2540170	Pistone	Piston	1							
12	2540100	OR Ø 6,02x2,62	O-Ring	2							
13	2540190	Guida pistone	Piston guide	1							
14	740291	OR Ø 14x1,78	O-Ring	1							
15	1123580	OR Ø 12,42x1,78	O-Ring	1							
16	2549000	Prem. otturatore	Jet pre-assembly	1							
17	2540150	Sede appoggio	Seat	1							
18	2540110	OR Ø 10,77x2,62	O-Ring	1							
19	2540250	Corpo valvola	Valve housing	1							
20	2540090	OR Ø 5,94x3,53	O-Ring	1							
21	2540220	Otturatore mandata	Jet	1							
22	2540230	Molla	Spring	1							
23	2540120	OR Ø 20,35x1,78	O-Ring	1							
24	2540140	Nipples mandata	Threaded adapter	1	3/8" G						
25	2540200	Boccola	Bushing	1							
27	2540130	Anello antiestrusione	Back-up ring	1							

## KIT RICAMBI PART KITS

## LEGENDA :

E=KIT 2170 OR O-Rings							
pos.	Q.ty	pos.	Q.ty	pos.	Q.ty	pos.	Q.ty
12	2	27	1				
14	1						
15	1						
18	1						
20	1						
23	1						

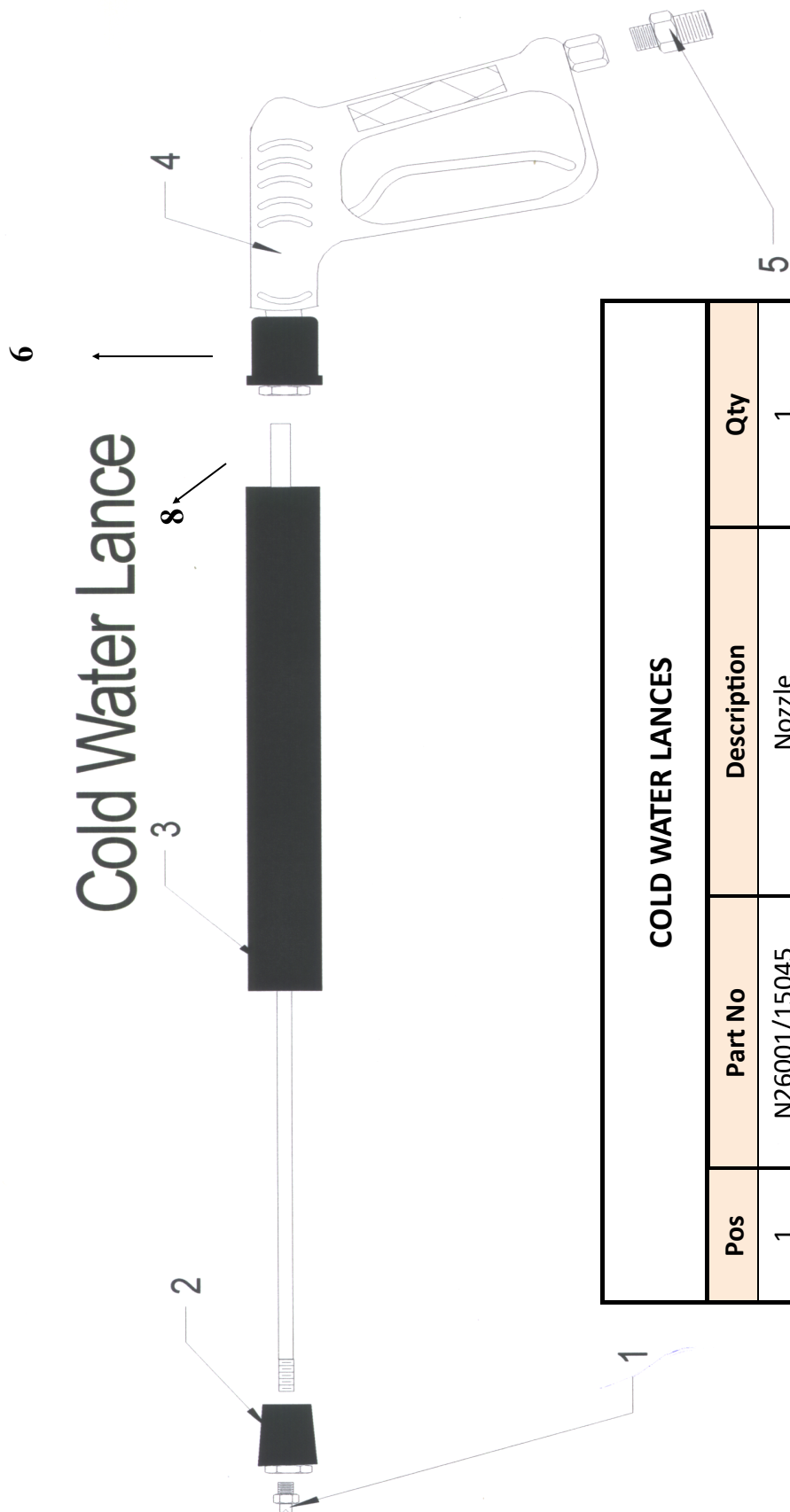
pos.	Q.ty	pos.	Q.ty	pos.	Q.ty	pos.	Q.ty





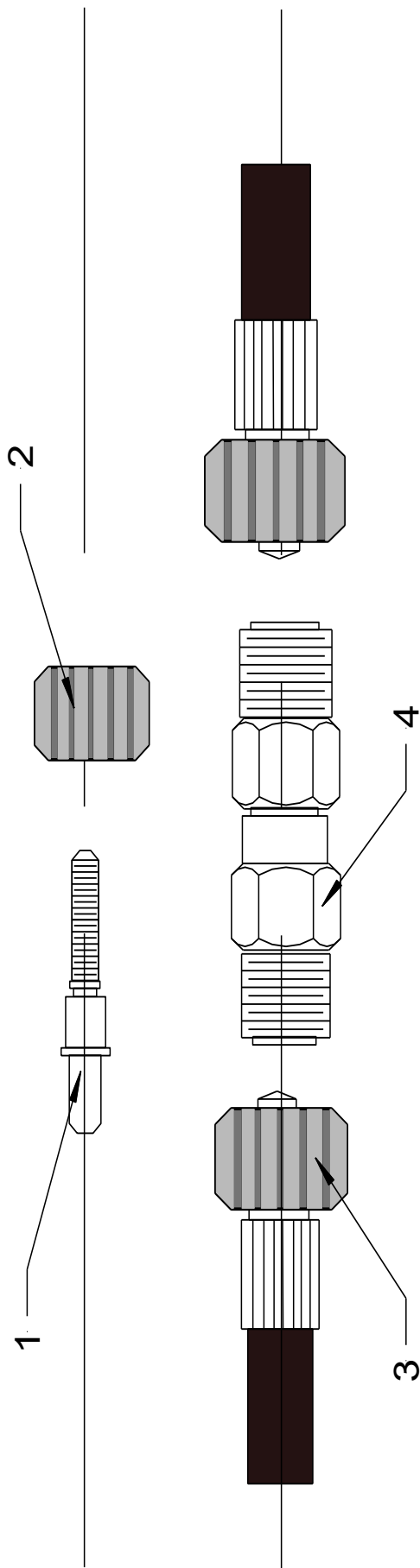


# Cold Water Lance



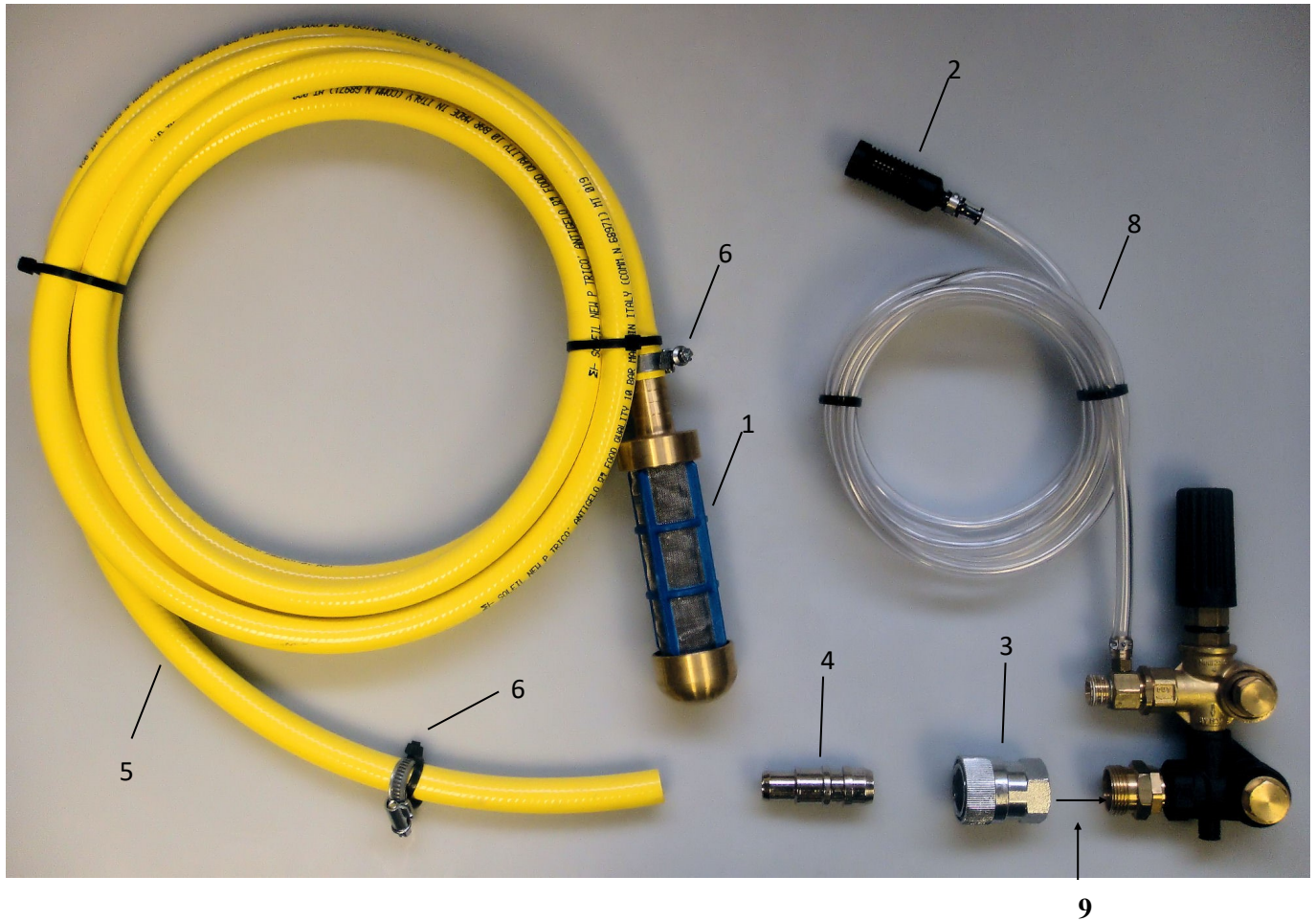
COLD WATER LANCES				
Pos	Part No	Description	Qty	
1	N26001/15045	Nozzle	1	
2	MTM90040	Adjustable Nozzle	1	
3	DEM10031B	QR Lance	1	
4	DEM10030	QR Trigger	1	
5	MTM70012	MVG Coupling	1	

# High Pressure Hoses



1.	Hose Insert	MV00490 (items 1 & 2)
2.	Nut	
3.	High Pressure Hose	HH00030MVG
4.	Hose Joiner	MV00500
Alternative Hose Lengths		
	15 Metre	HH00050MVG
	30 Metre	HH00100MVG

## Storm Range Inlet Fittings



Position	Part No	Description	Qty
1	DEM10041	100 Mesh Suction Filter	
2	MTM86010	Chemical Filter	
3	MTM73001	QR Nipple Female	
4	MTM73020	QR Nipple Male	
5	HH0053	Yellow Hose	
6	DEM20500	Jubilee Clip	
7	DEM10042 INC (1-4-5-6)	Suction filter with Hose and fittings	
8	DEM10115	Detergent Pipe (Chemical Pipe)	3mtr
9	MTM73K991	Plastic washer for NO 3	

# EC DECLARATION OF CONFORMITY

We **Demon International Ltd**  
Of **Abbots Close, Lee Mill Industrial Estate, Ivybridge, Devon PL21 9GA**

Declare that:

Equipment **High Pressure Water Jet Machines**

Model name/number

Serial number

Conforms to the relevant safety and health related requirements of the appropriate EC Directives. This declaration shall cease to be valid if modifications are made to the machine without our approval.

In accordance with the following EU Directives:

**73/23/EEC**      **The Low Voltage Directive** – and its amending directives  
**89/336/EEC**      **The Electromagnetic Compatibility Directive** – and its amending directives  
**98/37/EEC**      **The Machinery Directive** – and its amending directives  
**2000/14/EC**      **Noise Directive**

Harmonised Standards Applied:

**EN 292-1 & EN292-2 (now ISO:12100), EN 60335-2-79, EN55014-1, EN55014-2, EN 61000-3-2**

Applied national standards and technical specifications:

**DS EN 60335-2-79**

Applied conformity evaluation method

**Appendix V**

Sound power level dB(A):

<b>Storm 4</b>	<b>Hurricane D1</b>	<b>Mini Bowser D1</b>
<b>84</b>	<b>88</b>	<b>88</b>
<b>85</b>	<b>89</b>	<b>89</b>

**HAV – All triggers and lances have vibration levels below 2.5 m/s/s<sup>2</sup>**

I hereby declare that the equipment named above has been designed to comply with the relevant sections of the above referenced specifications. The unit complies with all essential requirements of the Directives.

Signed:



**Martyn Walke**

**Authority: Technical Director**

Date:

**Technical Documentation Address:** Abbots Close, Lee Mill Industrial Estate, Ivybridge, Devon PL21 9GA

# UKCA Declaration of Conformity

We **Demon International Ltd**

Of **Abbots Close, Lee Mill Industrial Estate, Ivybridge, Devon PL21 9GA**

Declare that:

**Equipment: Industrial Pressure Washer**

**Model name/number:**

**Serial number:**

**Conforms to the relevant safety and health related requirements of the appropriate UK Legislation. This declaration shall cease to be valid if modifications are made to the machine without our approval.**

**In accordance with the following UK Legislation:**

**The Electrical Equipment (Safety) Regulations 2016 – and its amended directives**

**Electromagnetic Compatibility Regulations 2016 – and its amended directives**

**Supply of Machinery (Safety) Regulations 2008 – and its amended directives**

**Noise Emission in the Environment by Equipment for use Outdoors Regulations 2001 – and its amended directives**

**Harmonised Standards Applied:**

**British Standards Institution (BSI)**

**Sound power level dB(A):**

Storm 4	Hurricane D1	Mini Bowser D1
84	88	88
85	89	89

**HAV – All triggers and lances have vibration levels below 2.5 m/s<sup>2</sup>**

I hereby declare that the equipment named above has been designed to comply with the relevant sections of the above referenced specifications. The unit complies with all essential requirements of the UK Legislation.

**Signed:**



**Authority:** *Technical Director*

**Date:**

**Technical Documentation Address:** Abbots Close, Lee Mill Industrial Estate, Ivybridge, Devon PL21 9GA