

2132/01 SC14 SUPER OFFICE AIR CONDITIONER

BASIC SAFETY

Before using this equipment and to avoid personal injury, carefully read and understand these instructions. If there is anything you do not understand, **DO NOT** use this equipment; contact the hire company for advice.

Make sure you are aware of all safety requirements and that this equipment is suitable for the task you wish to undertake.

The work area must be cordoned off from the general public and bystanders.

This equipment must not be operated by persons who are under the influence of alcohol or drugs. Do not use this equipment if you are tired or unwell.



This equipment must only be used by persons who are medically fit to do so. If you have any medical condition, are recovering from any medical condition or suffer from any mental or physical disability, you MUST seek professional medical advice before using this equipment.

You **MUST** perform a risk assessment before using this equipment to ensure your safety and the safety of others.

Do not wear loose jewellery or clothing that may get in the way or become trapped in the equipment.

Inform everyone in the area of what you are doing.

DAMAGE RISK

Never place the Air Conditioner or its components on any surface, which may be damaged by heat, cold or water.

Always operate, store and transport this equipment in an upright position.

Do not cover this equipment or obstruct its air intake or outlet.

GET FAMILIAR! You must understand how to switch this machine **OFF** quickly in case of an emergency.



This equipment weighs in excess of 25KG; do not attempt to lift it.

Make sure that all guards are present and correctly fitted.

Do not lift or move the unit by its power supply cable or umbilical cord.

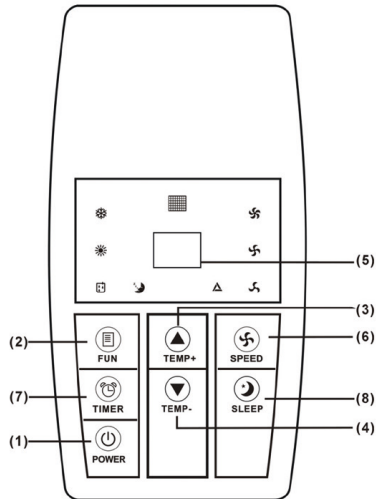
Always switch **OFF** the Air Conditioner and isolate it from the power supply before cleaning, making adjustments or when left unattended.

Carefully inspect the equipment before use, if there is any doubt about its conditions, **DO NOT USE IT.**

ELECTRICAL SAFETY

The hirer is responsible for providing an adequate electrical supply on site for the amount of equipment being connected to the supply. Check the voltage is correct and that the supply can deliver the current required for the equipment (the power requirements of the equipment will be shown on its rating plate).

CONTROLS



- 1. POWER** Press this switch to switch on or off
- 2. FUNC** Press this switch to select between the functions "Cooling", "Heating" or "Dehumidify"
- 3. TEMP+** Press this switch in the cooling function in order to set the required room temperature by 1°C respectively up to a maximum temperature of 30°C. Press this switch in the heating function in order to set the required room temperature by 1°C respectively up to a maximum temperature of 25°C
- 4. TEMP-** Press this switch in the cooling function in order to set the required room temperature by 1°C respectively up to a minimum temperature of 17°C. Press this switch in the heating function in order to set the required room temperature by 1°C respectively up to a minimum temperature of 15°C
- 5. LED-DISPLAY** The display shows the setting temperature in operation. By pressing the TEMP+ or TEMP- switch, the required target temperature is briefly displayed. On pressing the TIMER switch, the number of hours is briefly shown until activation or deactivation. After each manual setting, the display automatically shows the setting temperature. In the dehumidification function, "DH" is shown in the display. Error messages are also shown in the display.
- 6. SPEED** Press this switch to set the ventilation speed to "LOW", "MID" (middle), "HI" (high) or "AUTO" (automatic). If "AUTO" is selected, the ventilator operates at temperature differences larger than 9 degrees at top speed. If the temperature reduces to a difference smaller than 4 degrees, the ventilator switches to middle blower position. If the temperature reduces further until the target temperature, the ventilator switches to the lowest blower position.

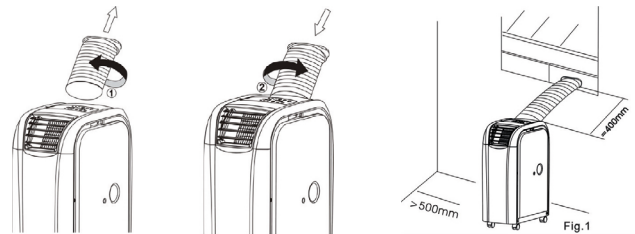
PREPARATION

Choose a location for the unit where the floor is level and stable. Make sure that the power supply and exhaust exit are within easy reach.

Keep a minimum 300 mm space around the unit for good air circulation. **DO NOT** cover the unit's ventilation slots.

SETTING UP THE AIR CONDITIONER

Position the unit as required. Check that the flow of air will not disturb dust or paperwork. Make sure too that the air is **NOT** aimed directly at anyone, especially those wearing contact lenses, asthmatics and hay fever sufferers.



Attach the exhaust connector with hose to the hot air outlet on the rear panel with the hose pointing up, it simply slots on.

Next, route the hose to a suitable discharge point. You have the option of discharging through a window or external door. It is also possible to feed the exhaust into a ceiling cavity. You must remember that the exhaust hose is used to remove hot air and will be hot to the touch. If the air is directed into another room that room will be heated which will be uncomfortable for any one in it and may damage sensitive items stored in it.

When routing the hose, it is OK if it is on an upward or downward run but you must **NOT** allow it to kink in the middle.

OPERATING CONDITIONS

This Air Conditioner can be used in room temperatures between 6°C and 35°C.

The compressor will **NOT** operate if the temperature is below approximately 6°C, although the fans will, to allow for venting use.

If the room temperature is above 35 degrees the performance of the unit will reduce due to excessive heat. To reduce the temperature, open all available doors and windows. Then simply operate the Air Conditioner in fan only mode.

OPERATING THE AIR CONDITIONER

Having sited the Air Conditioner and set up the exhaust hose, leave the unit to settle for a minimum of 15 minutes to allow its refrigerant to settle before plugging it into the power supply and switching the supply **ON**.

AS AN AIR CONDITIONER

Once ready, plug the unit into its power supply and switch the supply **ON**.

Press the mode button until the 'frost' lamp illuminates. Now press the increase and decrease buttons until the required room temperature is displayed. For best results, set between 22 and 24 degrees.

Press the fan speed button to select the required speed. You can now press the ON/Standby button to start the unit.

AUTOMATIC SETTING

The unit will run and control the temperature of the room automatically with no adjustments required by the user. Press the mode button until the 'A' lamp illuminates.

You can now press the ON/Standby button to start the unit.

AS FAN ONLY

In this mode, only the fan operates.

Press the mode button until the 'fan' lamp illuminates. Press the fan speed button to select the required speed.

You can now press the ON/Standby button to start the unit.

AS A DEHUMIDIFIER

Press the mode button to select the dehumidifier option. You can now press the ON/OFF button to start the unit.

TIMER OPERATION

You can set the unit to stop after a pre-programmed time and must be set after you have selected the required mode. Press the timer button, the digital display will change from temperature to time. Now press the increase and decrease buttons until the required duration is shown.

You can now press the ON/Standby button to start the unit.

PROGRAMMING THE UNIT

You can set the unit to start and or stop after a preprogrammed time.

Firstly, you must set the timer to show the correct current time. To do this, move the outer ring clockwise with your finger until the current time is shown in line with the inner pointer. Note, the Air Conditioner must be connected to the power supply whenever the programmer is being used. Finally, move the respective tabs in for OFF and out for ON at the respective times. Each tab represents 15 minutes.

EQUIPMENT MAINTENANCE & CLEANING

When not being used, store the unit in a clean condition and in a safe place where it will be protected from frost or freezing conditions.

FINALLY

When you have finished, set the unit to standby and disconnect it from the power supply.

Leave the Air Conditioner for a minimum of 15 minutes then give the unit a thorough clean ready for return.

NOTE

Failure to clean the equipment thoroughly may make you liable to a cleaning charge.