

# nifty



## HR21

### SELF PROPELLED ACCESS PLATFORM



**20.70m (68ft)**  
Working height

**12.60m (41ft 4in)**  
Unrestricted working  
outreach at 225kg

**45% Gradeability**  
4WD for rough terrain

**GVW Only 6,220kg**  
Lightest in its class

**Superb Manoeuvrability**  
4m outside turning radius

**Unique Suspension System**  
Improving traction & comfort

**Swing-Out Engine Tray**  
Quick & easy to service

**Platform Rotation  
& Fly-Boom**  
Improved access to  
applications



**niftylift.com**





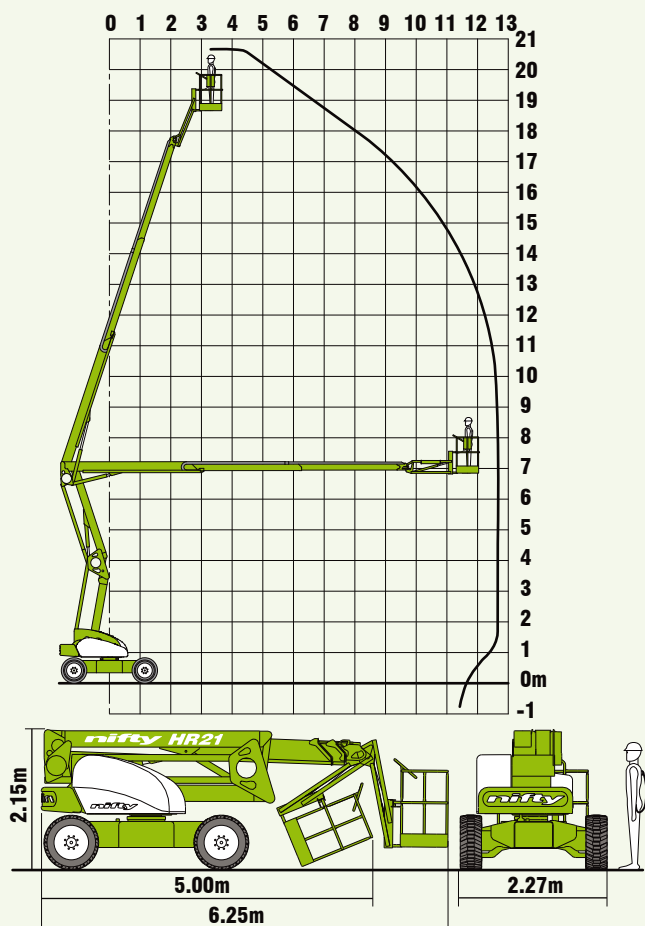
# nifty

## Heightrider 21

The Nifty **Height Rider 21 (HR21)** is available with 2 or 4-wheel-drive (2WD or 4WD). The **2WD** version offers Nifty's versatile Bi-Energy option combining battery with Diesel power for ultimate flexibility and maximised utilisation. The **4WD** version delivers superb traction through its unique suspension and powerful motors. Both combine innovative weight and space saving design with an excellent turning circle for better manoeuvrability on-site and lower transportation costs. Proportional controls deliver smooth, measured operation while platform rotation and fly-boom allow precise positioning anywhere in its vast working envelope.

### SAFETY FEATURES

- Automatic Failsafe Brakes
- Tilt Alarm
- Foam Filled Tyres
- Manual Recovery with Hand Pump
- Dual Controls (Platform & Base)
- Lock Valves on all Hydraulic Cylinders
- Dual Harness Points
- CE Mark



Due to a policy of continuing development and improvement, Niftylift reserves the right to change any specification without notice. Please confirm exact specification before ordering.



The **HR21** offers exceptional outreach. Whether it be up-and-over access to awkward locations or outreach to jobs below ground level. The **HR21** does it all still leaving plenty of space in the platform for tools and equipment.



### SPECIFICATIONS

<b>Working Height</b>	20.70m	68ft
<b>Platform Height</b>	18.70m	61ft 4in
<b>Working Outreach</b>	12.60m	41ft 4in
<b>Slew</b>	360°	
<b>Fly-Boom Arc</b>	150°	
<b>Width</b>	2.27m	7ft 5in
<b>Height</b>	2.15m	7ft
<b>Length - Stowed</b>	5.00m	16ft 5in
<b>- Overall</b>	6.25m	20ft 6in
<b>Minimum Weight - (2x4)</b>	6,220kg*	13,700lbs*
<b>- (4x4)</b>	6,220kg*	13,700lbs*
<b>Turning Radius - Inside</b>	0.78m	2ft 7in
<b>- Outside</b>	4.00m	13ft
<b>Platform Rotation</b>	100°	
<b>Platform Capacity</b>	225kg	500lbs
<b>Platform Size</b>	1.80m x 0.70m	5ft 11in x 2ft 4in
<b>Drive Speed - (2x4)</b>	4.5kph	2.8mph
<b>- (4x4)</b>	6.6kph	4.1mph
<b>Gradeability</b>	30% (2x4)	45% (4x4)
<b>Power System - (2x4)</b>	Battery Only	
	Bi-Energy (Battery & Diesel) Kubota 722 (18Hp)	
<b>- (4x4)</b>	Diesel Only Kubota 1505 (32Hp)	

\* Weights may vary according to specification, please confirm before ordering.

Supplied by:

Manufacturers of trailer mounted,  
self propelled and vehicle mounted platforms.

**NIFTYLIFT LTD**  
Fingle Drive  
Stonebridge  
Milton Keynes  
MK13 0ER  
England  
www.niftylift.com  
e.mail: info@niftylift.com  
Tel.: +44 (0)1908 223456  
Fax.: +44 (0)1908 312733

