

ARRIFLEX 235



CONFIGURATION OVERVIEW - 2.4.0 / 2012.04

© 2010 Arnold & Richter Cine Technik GmbH & Co. Betriebs KG. All rights reserved. This material is provided "as is" for information purposes only without any warranty. ARRI assumes no responsibility with regard to the performance or use of the products or typographical errors or inaccuracies of given information. Product specifications are subject to change without notice. For a full listing of all available components consult the price list.

Support, Handels & Extras



Standard Camera Handle SCH-1, K2.55004.0



Handle Extension Block, HEB-1 K4.65107.0



235 Low Mode Handle LMH-1 K2.55006.0



235 Side Bracket SBR-1 K2.55015.0 (rods: see Overview 6.2.0)



235 Low Mode Support LMS-1 K2.55014.0



Compact Rod Holder CRH-1, K2.65037.0
15mm Reduction Set K2.65078.0



Left Rod Bracket LRB-1 K2.65052.0
15mm Reduction Set K2.47735.0



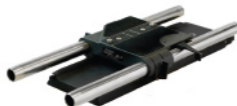
235 Shoulder Pad SP-1 K2.55005.0



Camera Handgrip Right K2.45886.0



235 Riser Plate RP-1 K2.55002.0



Bridge Plate BP-8 K2.47090.0



235 On Board Battery OBB-1 K2.47553.0
Cable: K2.47555.0 (not included)
235 On Board Battery Charger K2.47554.0



Shoulder Set
ARRICAM Studio/Lite incl. Shoulder Pad K2.54023.0

Accessories



Auto-Iris Heated Eyecup HE-5, K2.47769.0
Cable K2.47771.0



Heated Eyecup HE-4, K2.47794.0
Cable K2.47771.0



External Sync Unit ESU-1, K2.46006.0
Cables KC-32 & KC-33 and pickup box included



External Display EXD-1, K2.55013.0, (incl. cable KC-100 S 0.8 m / 2.7 ft, K4.65207.0)
KC-122 S 20 m / 66 ft, K2.65067.0



Universal Mounting Arm UMA-120 K2.65020.0



Accessory Power Box, APB K2.54177.0



Wireless Remote Control WRC-2 incl. Control Knob Unit - for Sets please see Overview 5.5.0



Wireless Control Unit WCU-3 K2.65155.W (White Radio)



Flexible Shaft K2.32731.0, long (900mm)
K2.34100.0, short (300mm)



Quick Change Adapter K2.52080.0



Controlled Lens Motor CLM-3 K0.60057.0



Controlled Lens Motor CLM-2 K2.52036.0



Console CLM-2 K2.52035.0

External Display EXD-1, K2.55013.0, (incl. cable KC-100 S 0.8 m / 2.7 ft, K4.65207.0)
KC-122 S 20 m / 66 ft, K2.65067.0



Universal Mounting Arm UMA-120 K2.65020.0



Accessory Power Box, APB K2.54177.0



Lightweight Follow Focus Set LFF-1 K0.60021.0



235 Accessory Expansion Cable KC-88-S (CCU/ACC) K2.55011.0



Remote Switch RSA-4 K2.46942.0
RS-4 Extension Cable: K2.47207.0



WHA-2 Rod Bracket K2.52150.0



3/8" Accessory Shoe K2.54077.0



3/8" Accessory Shoe Expander, K2.54030.0



Ultrasonic Distance Measure UDM-1 Set K0.60055.0
Cable UDM-435 K4.65672.0

Viewfinder System



235 Spherical Viewfinder Set SV-1 K2.55009.0



235 Long Eyepiece Extension LEE-1 K2.55012.0



235 Universal Viewfinder Set UV-1 K2.55010.0



235 Medium Eyepiece Extension MEE-1 K2.55000.0



Eyepiece Leveler EL-3 K0.60039.0

Body

Arriflex 235 Body 4P K1.55000.0
3 perforation conversion kit K4.65170.0



2 Perforation Conversion Kit K2.65238.0

Arriflex 235 Body 3P K1.55000.3
4 perforation conversion kit K4.65226.0



Video Assist & Monitor



Mini Monitor 3.5T NTSC/PAL, K2.47817.0
Mounting Arm needed



Mini Monitor 6.6T NTSC/PAL, K2.47020.0
Mounting Arm needed



7" HD/SD Monitor HDM-7, K2.66106.0
Mounting Arm needed



Mini Monitor Arm, MMA-65 K2.41101.0



Univ. Mounting Arm, UMA-120 K2.65020.0



Univ. Mounting Arm, UMA-240 K2.41100.0



Adapter Hot Shoe 3/8" K2.41102.0



235 Integrated Video System K2.47524.0 (PAL)
K2.47525.0 (NTSC)

Wireless Remote System



Universal Motor Controller UMC-3A K2.65000.W (White Radio)

For details please see the Configuration Overview 5.1.0 „Wireless Remote System (WRS)“

Magazines



235 Shoulder Mag 60m/200ft SHM-1, K2.55001.0



235 Steadicam Mag 120m/400ft STM-1, K2.55008.0, reverse run



235 Shoulder Mag 120m/400ft SHM-2, K2.55016.0



435 ARRIMAG 120m/400ft K2.47083.0 - for reverse run

Cases



Case for 235 and two 60m/200ft 235 Shoulder Mags K2.65004.0



Case for four 60m/200ft 235 Shoulder Mags K2.65047.0



Case for four 120m/400ft 235 Shoulder Mags K2.65005.0



Case for two 120m/400ft Steadicam Mags K2.65050.0