

Studio Matte Box SMB-1 (6.6" x 6.6")



Configuration Overview | 7.4.0 / 2021.01

Sets for SMB-1



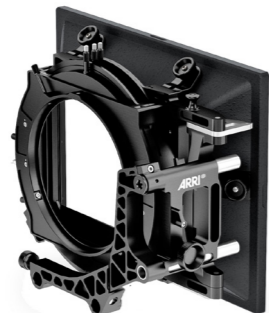
SMB-1 Tilt Set 19 mm, [KK.0005851](#)
including:
K2.66262.0 - SMB-1 Tilt
K2.0001465 - SMB-1 2-Filter Stage Incl. 2 Filter Frames
K2.0001462 - SMB-1 1-Filter Stage Incl. 1 Filter Frames
K2.0006076 - SMB-1 19 mm Studio Arm
K2.0001174 - 6" Tilting Filter Ring 150 mm



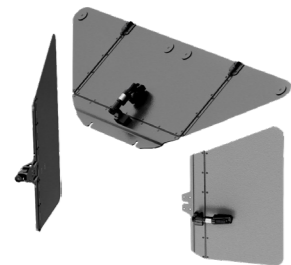
SMB-1 Tilt Set 15 mm, [KK.0005681](#)
including:
K2.66262.0 - SMB-1 Tilt
K2.0001465 - SMB-1 2-Filter Stage Incl. 2 Filter Frames
K2.0001462 - SMB-1 1-Filter Stage Incl. 1 Filter Frames
K2.0006097 - SMB-1 15 mm Studio Arm
K2.0001174 - 6" Tilting Filter Ring 150 mm



SMB-1 Basic Set 19 mm, [KK.0005682](#)
including:
K2.0001516 - SMB-1 Basic
K2.0001465 - SMB-1 2-Filter Stage Incl. 2 Filter Frames
K2.0001462 - SMB-1 1-Filter Stage Incl. 1 Filter Frames
K2.0006076 - SMB-1 19 mm Studio Arm



SMB-1 Basic Set 15 mm, [KK.0005683](#)
including:
K2.0001516 - SMB-1 Basic
K2.0001465 - SMB-1 2-Filter Stage Incl. 2 Filter Frames
K2.0001462 - SMB-1 1-Filter Stage Incl. 1 Filter Frames
K2.0006097 - SMB-1 15 mm Studio Arm



SMB-1 Lightshield Set, [KK.0005850](#)
including:
K2.66273.0 - SMB-1 Top/Bottom Flag
K2.66274.0 - SMB-1 Side Flags (Pair)



SMB-1 Accessory Set, [KK.0005848](#)
including:
K2.66267.0 - SMB-1 Mattes SPH
K2.0001161 - SMB-1 Mattes SPH /ANAM
K2.0001172 - SMB Accessory Adapter
K2.0001517 - SMB Top/Bottom Flag Holders (Pair)
K2.34890.0 - Flexible Shaft



SMB-1 Anamorphic Upgrade Set, [KK.0005849](#)
including:
K2.0001466 - SMB-1 Sunshade ANAM
K2.0001173 - SMB-1 Side Flags ANAM (pair)
K2.0000676 - SMB-1 Mattes ANAM

Accessories for SMB-1



SMB-1 Tilt
[K2.66262.0](#)



SMB-1 Basic
[K2.0001516](#)



SMB-1 1-Filter Stage
incl. 1 Filter Frame
(1x non geared)
[K2.0001462](#)



SMB-1 2-Filter Stage
incl. 2 Filter Frames
(1x non geared, 1x geared)
[K2.0001465](#)



SMB-1 Adapter for SMB-2 filter stages
[K2.0006526](#)



SMB-2 Back Plate 143 mm
[K2.0007765](#)



SMB-1 19mm Studio Arm
[K2.0006076](#)



SMB-1 Mattes SPH
[K2.66267.0](#)



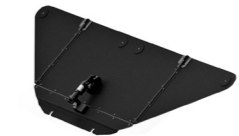
SMB-1 Mattes SPH/ANAM
[K2.0001161](#)



6" Tilting Filter Ring
ø 150mm R1, [K2.0001174](#)



SMB-1 Side Flags
[K2.66274.0](#) (pair)



SMB-1 Top/Bottom Flag
[K2.66273.0](#)



Triple Filter Frame, 6.6"x6.6"
[K2.0005906](#)



SMB-1 Sunshade ANAM
[K2.0001466](#)



SMB-1 Side Flags ANAM
[K2.0001173](#) (pair)



SMB-1 Mattes ANAM
[K2.0000676](#)



Case for SMB-1
[K2.0002669](#)
with variable dividers

Accessories for SMB-1 & SMB-2



SMB Extension Module
[K2.0001519](#)



SMB Tilt Module
[K2.0001520](#)



Flexible Shaft
[K2.34890.0](#)



SMB Accessory Adapter
[K2.0001172](#)



SMB Top/Bottom Flag Holders (pair)
[K2.0001517](#)

Rings R1 please see
Configuration Overview 9.0.0

Frames F1 please see
Configuration Overview 9.1.0

SMB-1 technical data:

The SMB-1 covers the ALEXA and the Master Prime 12mm with 2-filter-stage, 10mm Ultra prime with 1-filter stage, and the new ARRI UWZ 9.5-18mm ultra wide zoom with 1-filter stage.

SMB-1 features

- Tilt Module
- Stackable filter stages
- Anamorphic conversion set available
- Ready for ALEXA and 12 mm Master Prime
- Ready for ALEXA and Angenieux Optimo 24-290 mm
- Special donuts optimized for tilt available

CAUTION: RINGS CAN VIGNETTE, PLEASE CONTACT ARRI
ø = diameter of connection ring to lens

